

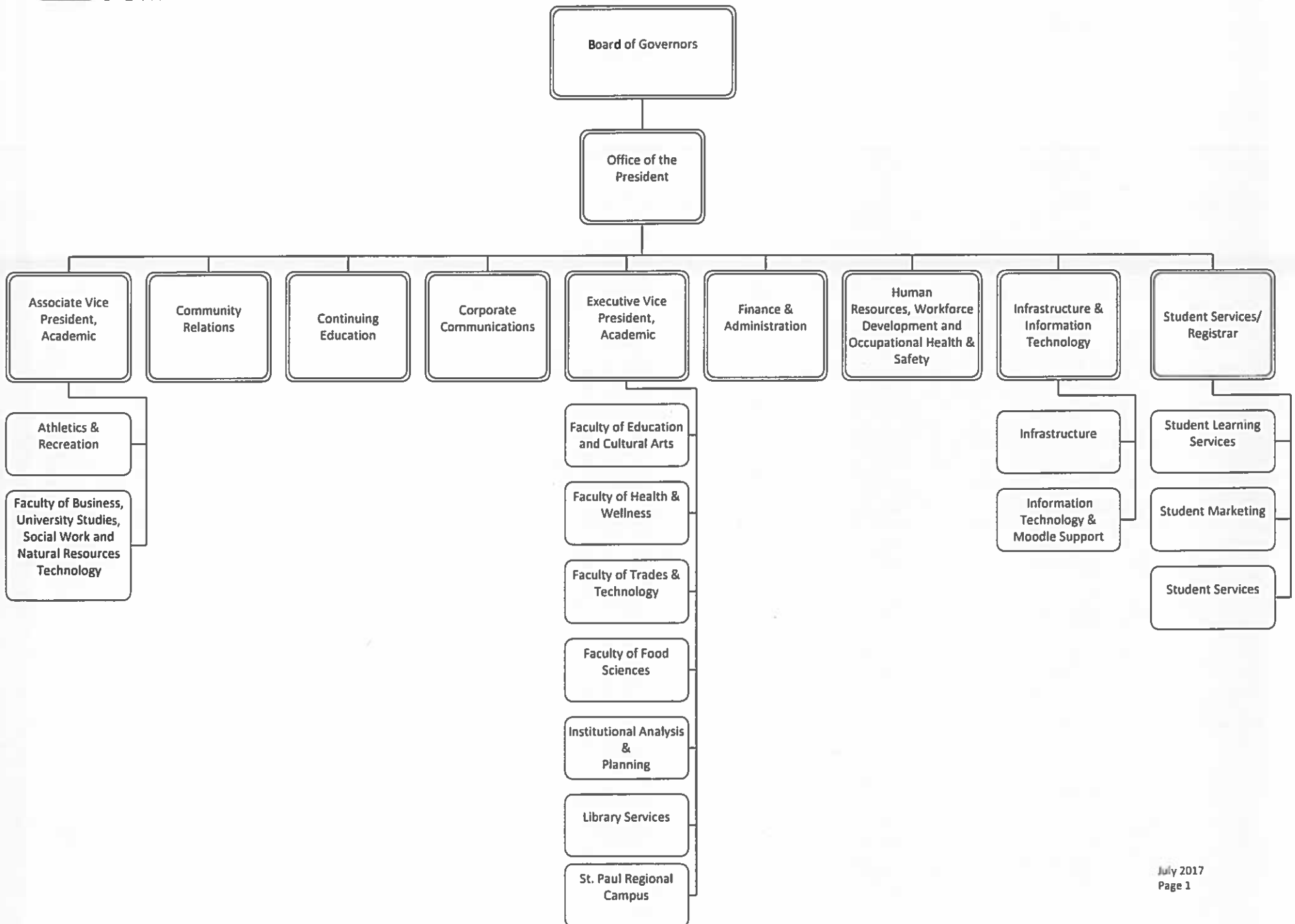


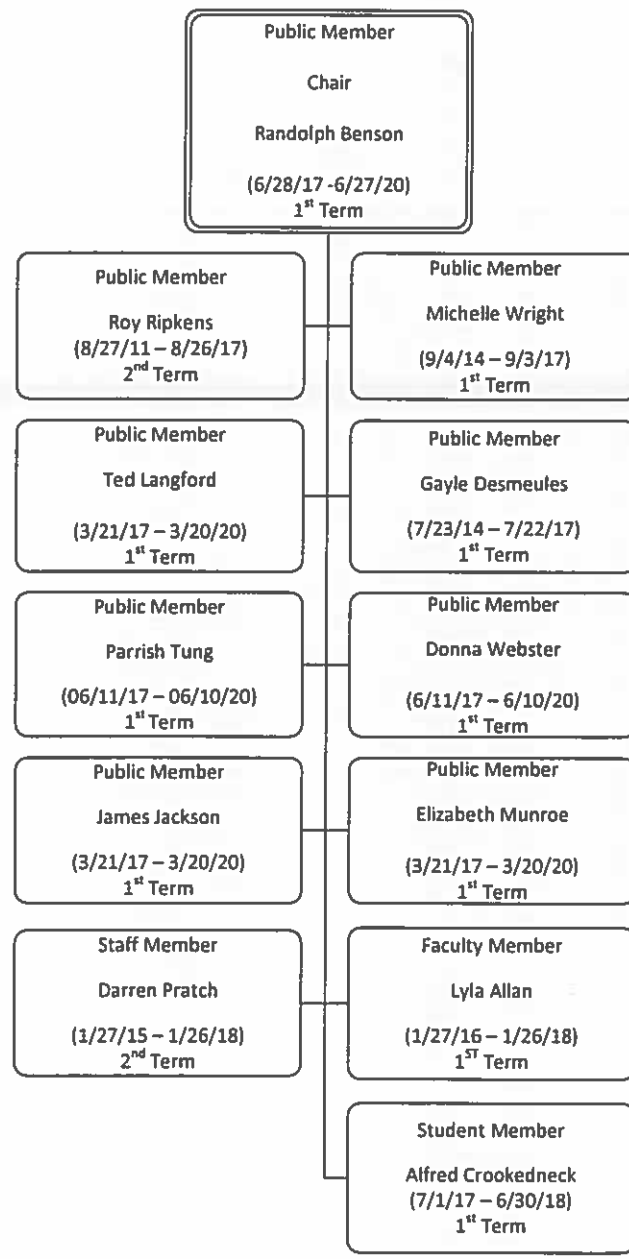
PORTAGE COLLEGE

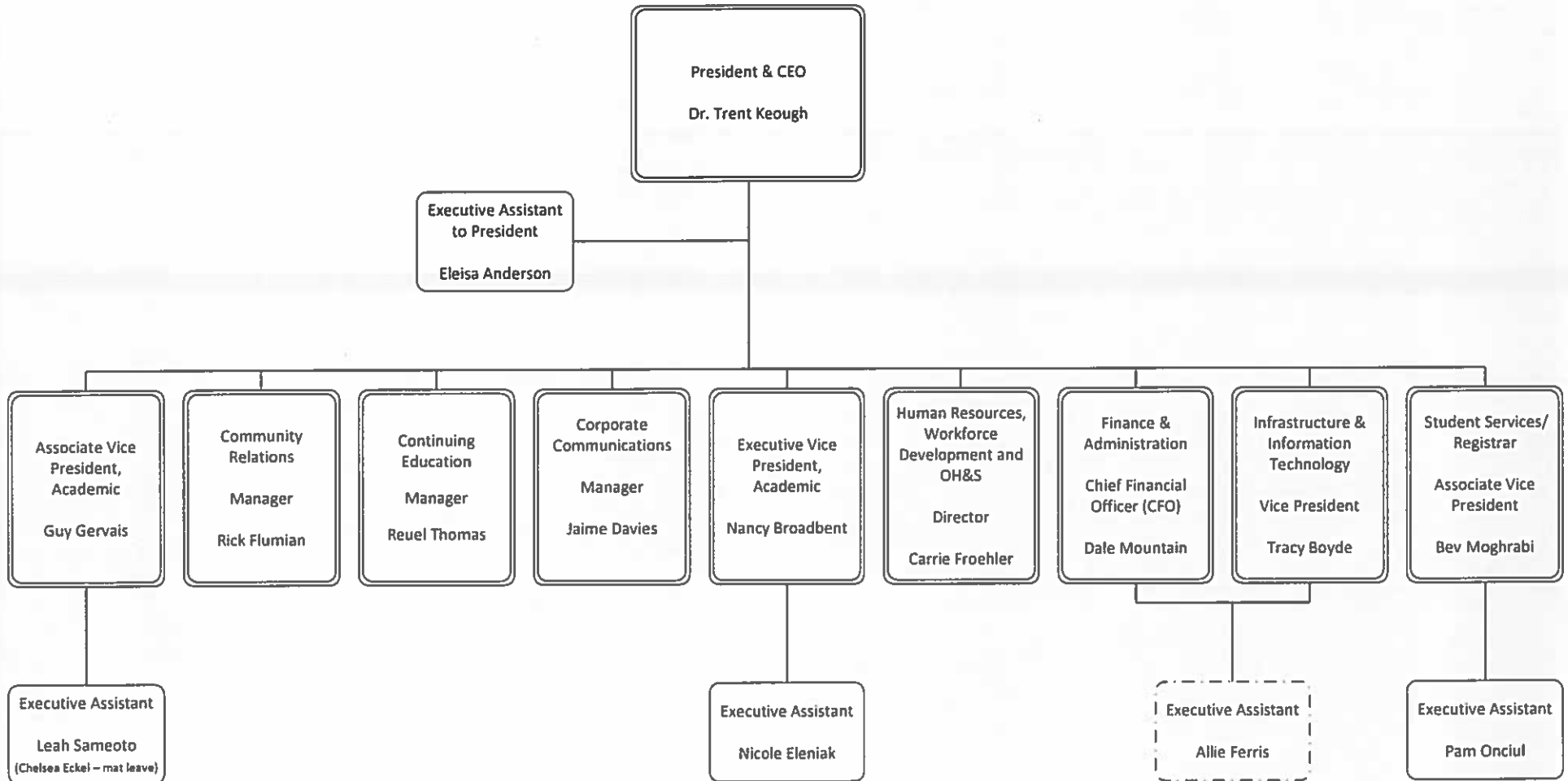
Organizational Charts

July 2017

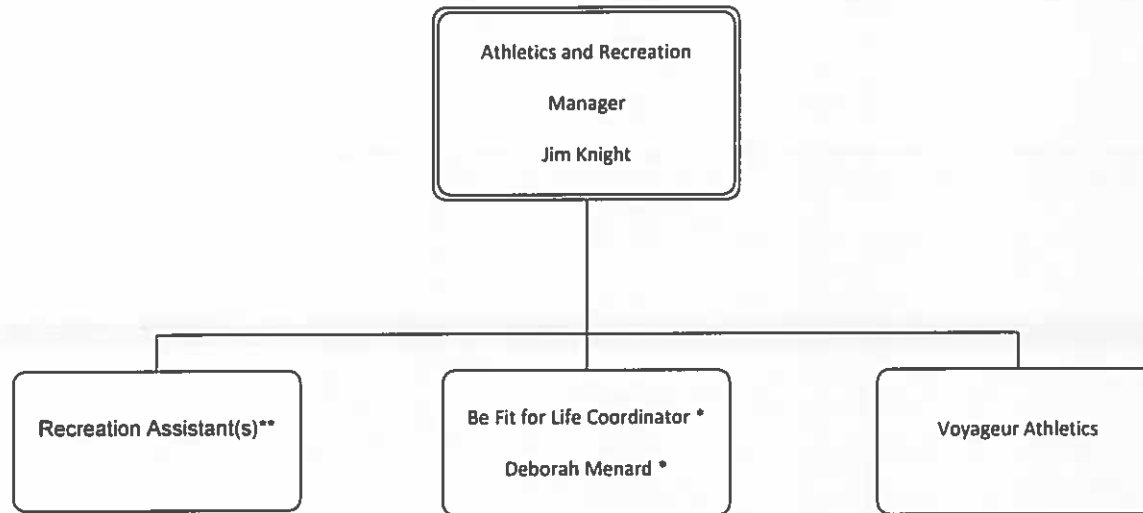
1. ORGANIZATIONAL STRUCTURE	1
2. BOARD OF GOVERNORS.....	2
3. OFFICE OF THE PRESIDENT.....	3
A. ASSOCIATE VICE PRESIDENT, ACADEMIC	
i. Athletics & Recreation.....	4
ii. Faculty of Business, University Studies, Social Work and Natural Resources Technology.....	5
B. CONTINUING EDUCATION.....	6
C. CORPORATE COMMUNICATIONS.....	7
D. EXECUTIVE VICE PRESIDENT, ACADEMIC.....	8
I. Faculty of Education and Cultural Arts.....	9
II. Faculty of Food Sciences.....	10
III. Faculty of Health & Wellness.....	11
IV. Faculty of Trades & Technology.....	12
V. Institutional Analysis and Planning.....	13
VI. Library Services.....	14
VII. St. Paul Regional Campus.....	15
E. FINANCE & ADMINISTRATION.....	16
F. HUMAN RESOURCES, WORKFORCE DEVELOPMENT AND OCCUPATIONAL HEALTH AND SAFETY.....	17
G. INFRASTRUCTURE & INFORMATION TECHNOLOGY & MOODLE SUPPORT, VICE PRESIDENT	
I. Information Technology & Moodle Support.....	18
II. Infrastructure.....	19
H. STUDENT SERVICES & REGISTRAR.....	20
I. Student Learning Services.....	21
II. Student Marketing.....	22
III. Student Services.....	23

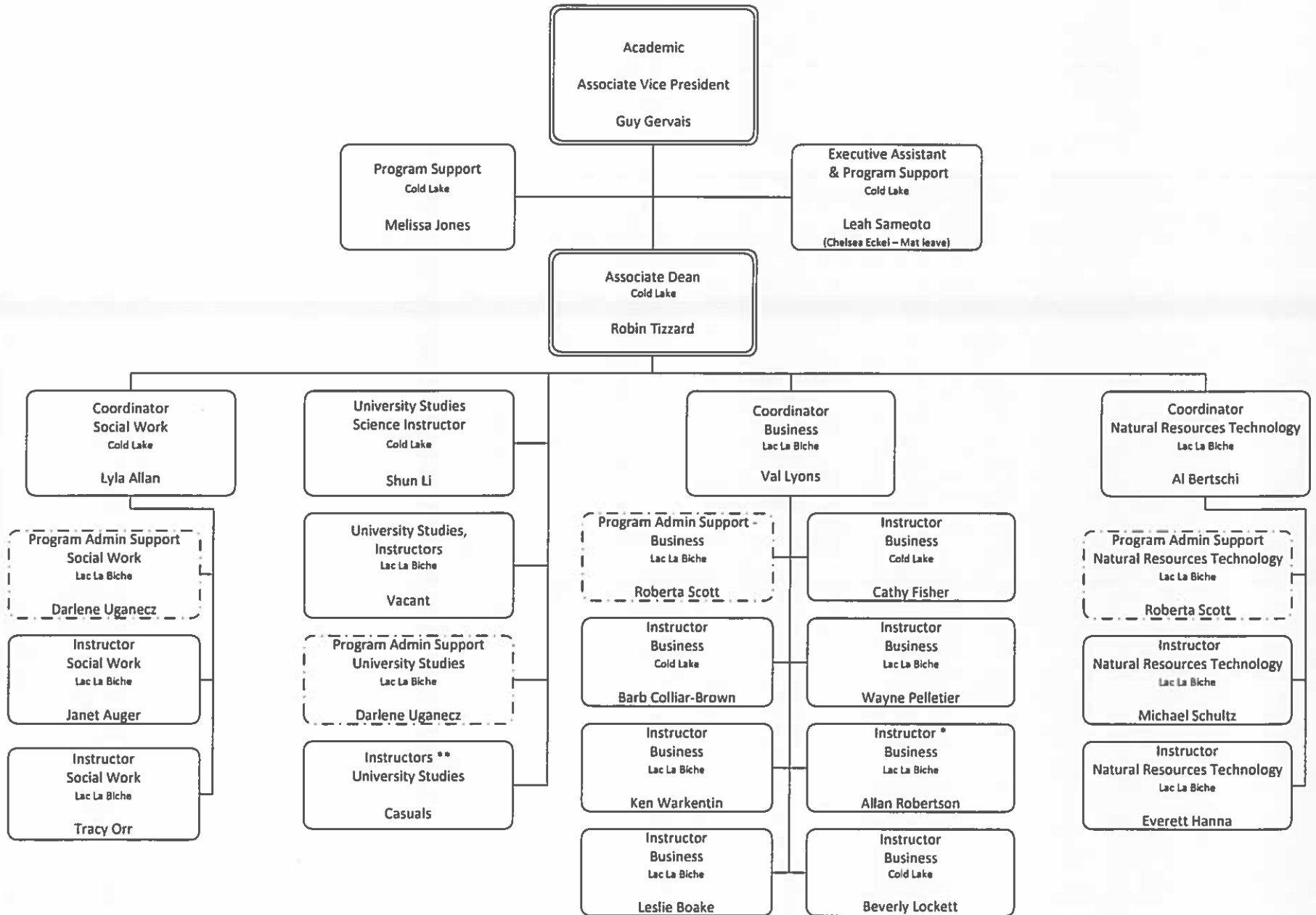


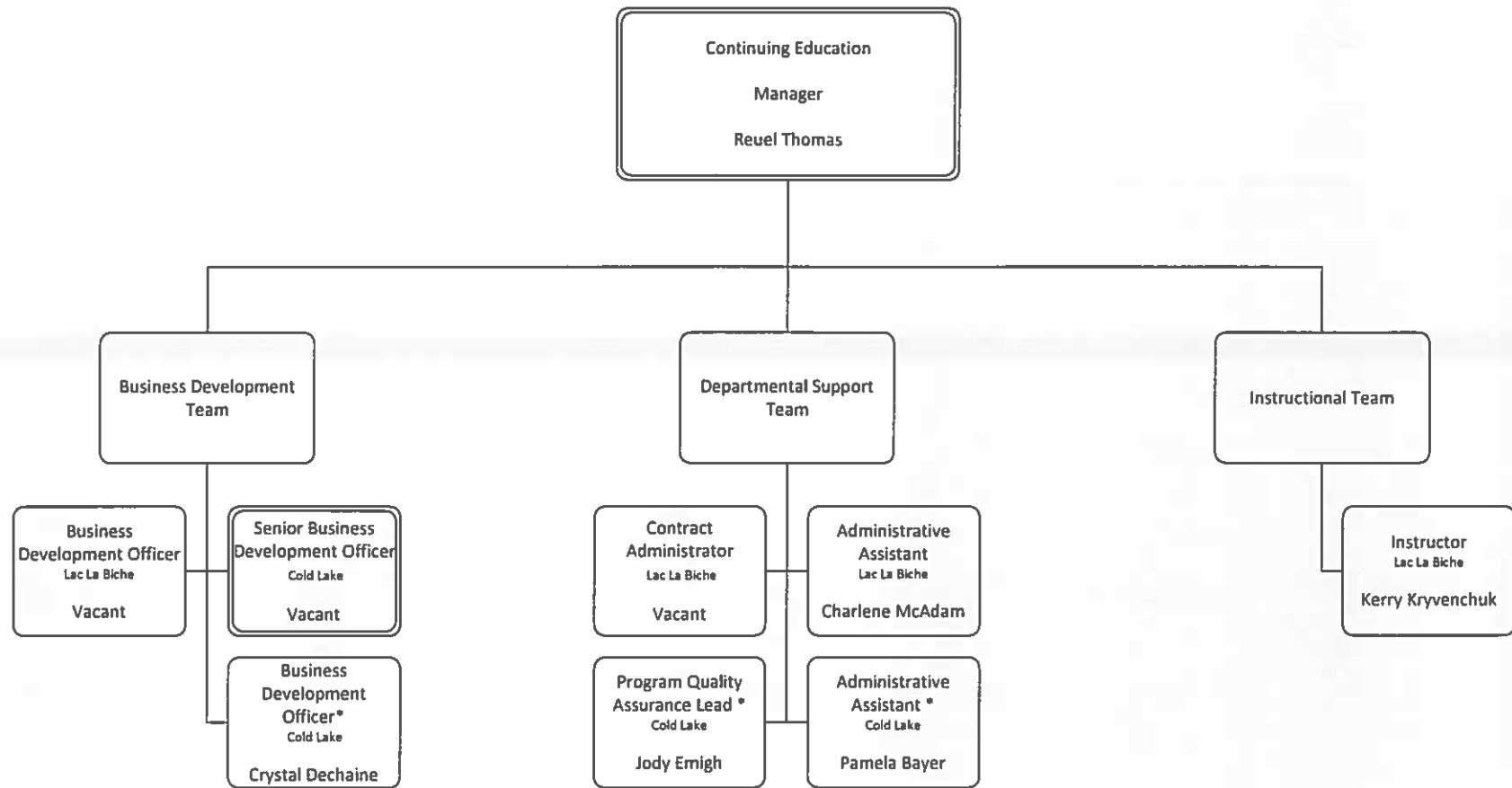


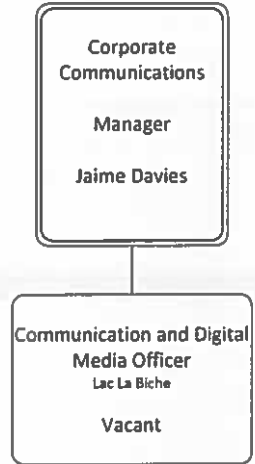


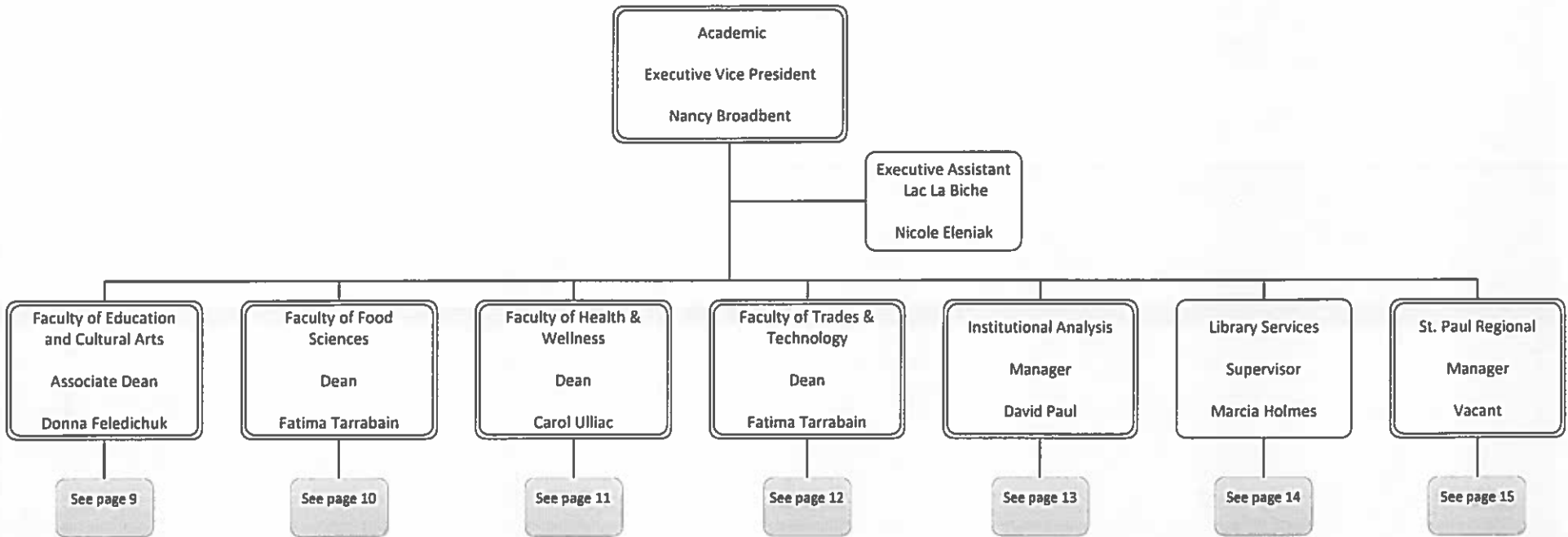
Dotted line represents shared reporting:
 1) Executive Assistant - Shared .5 Finance and Administration .5 VP Infrastructure & Information Technology & Moodle Support

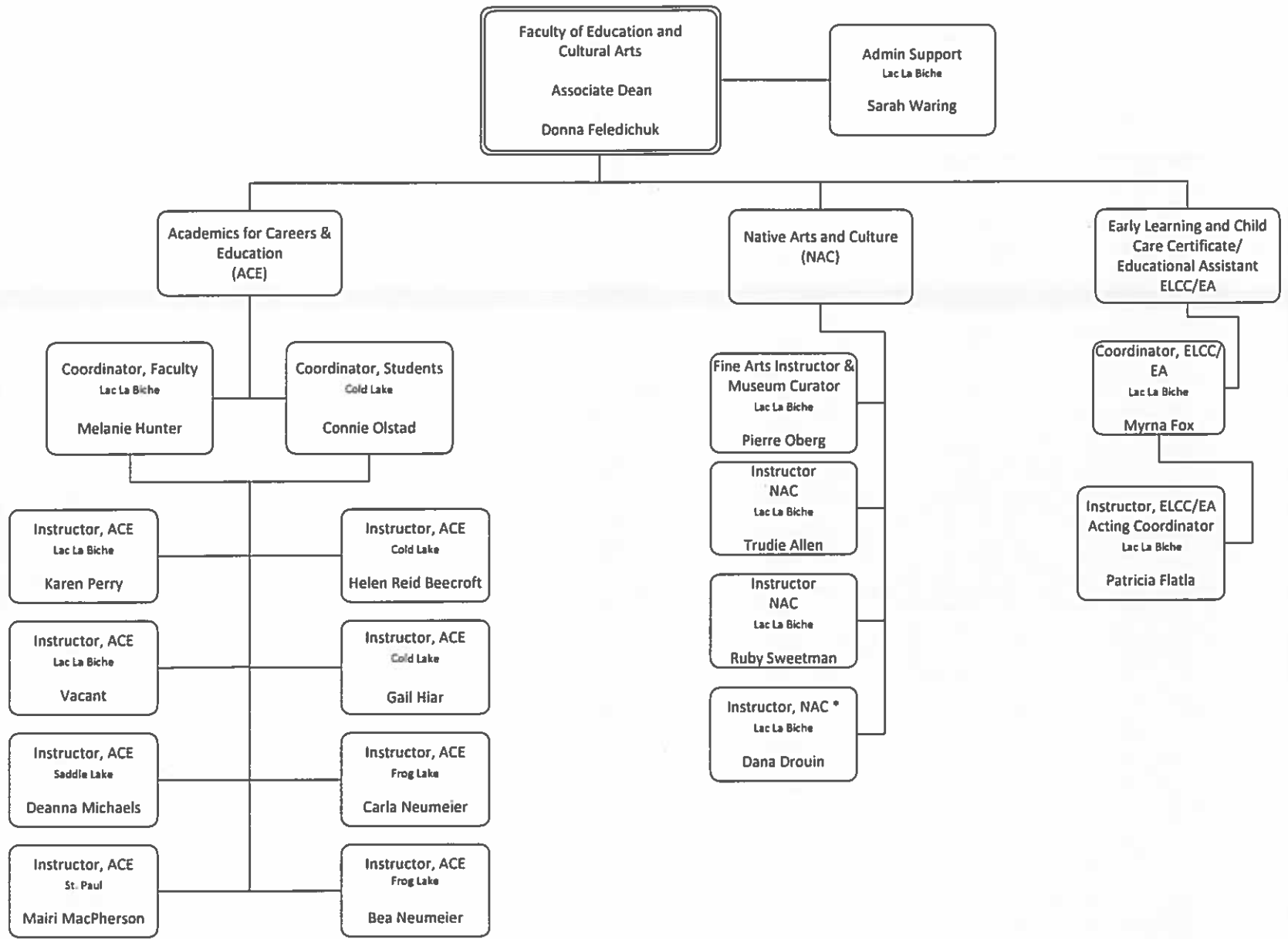


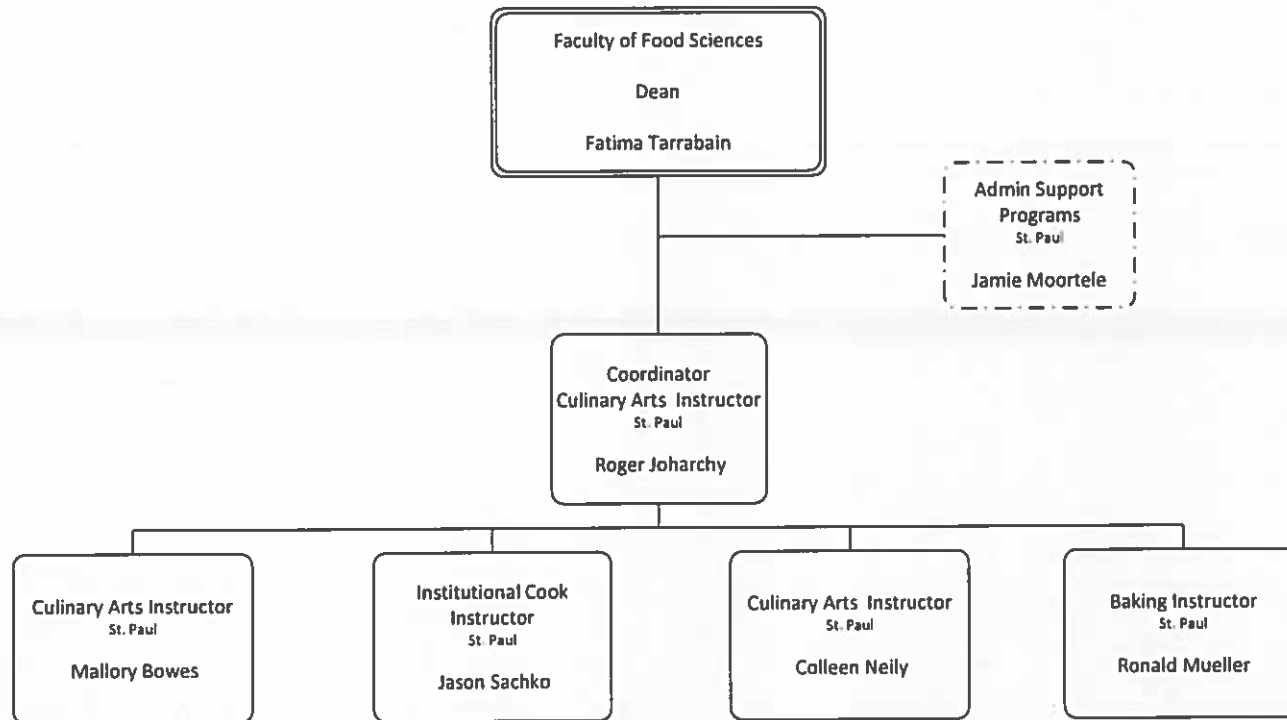






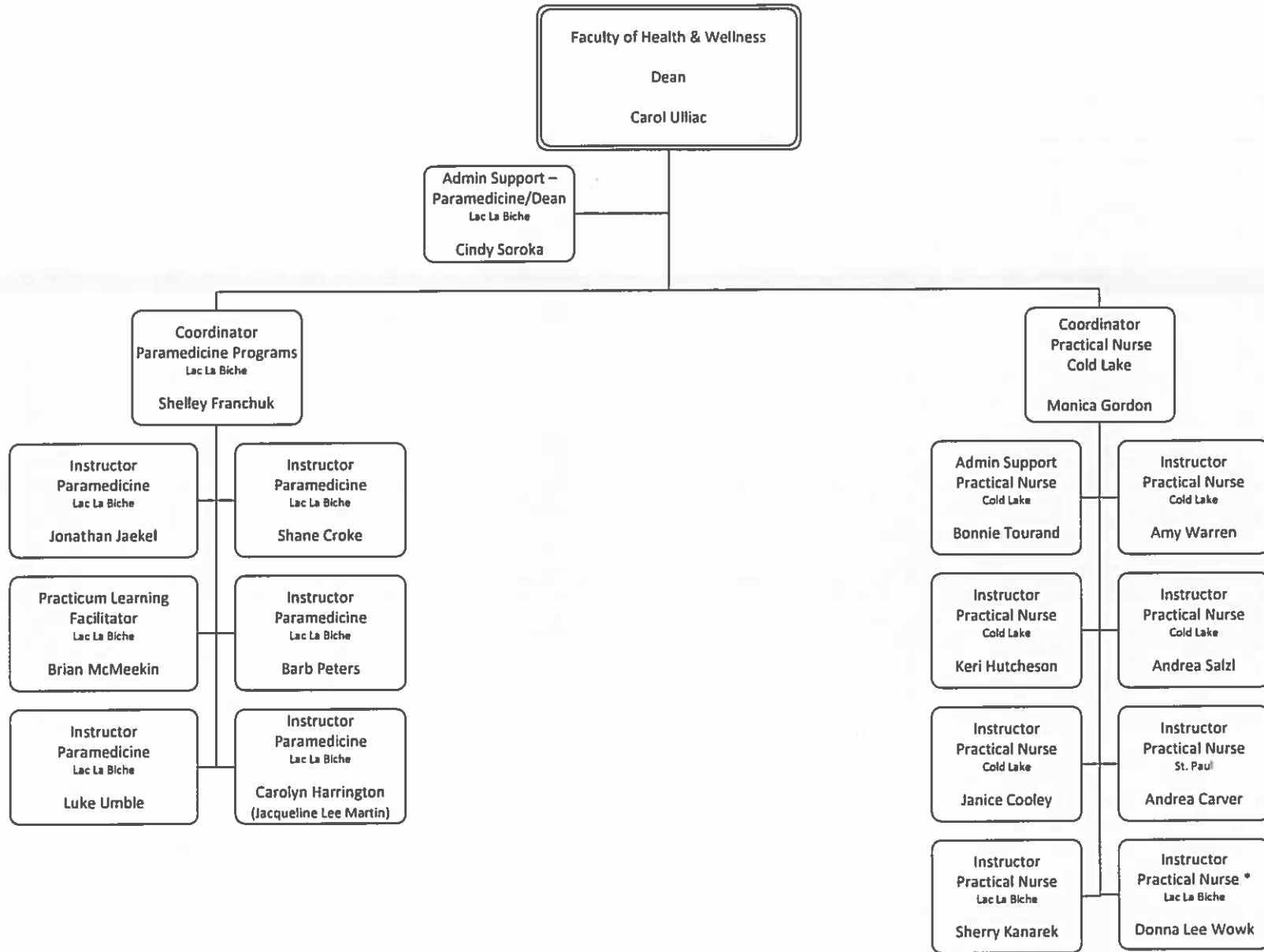


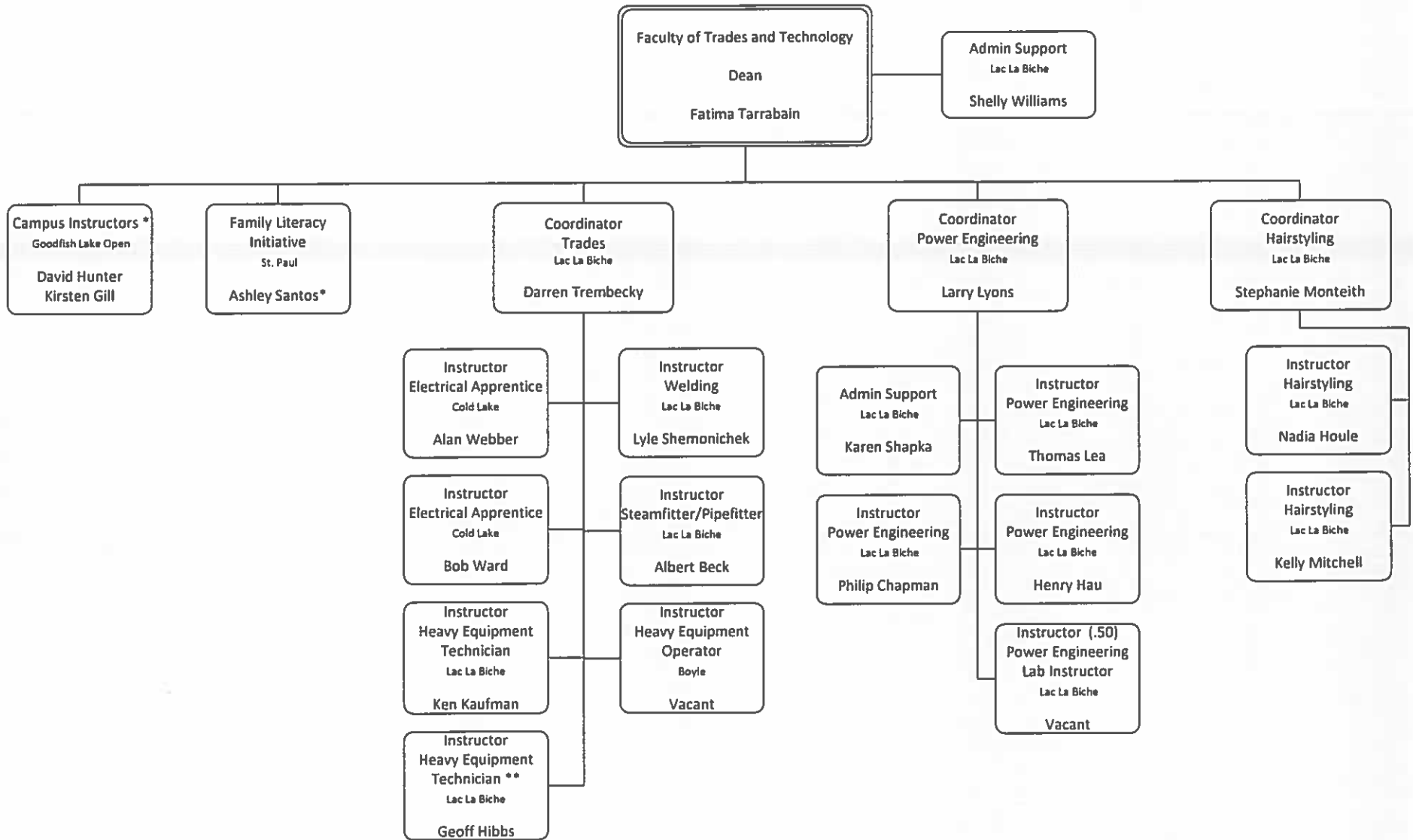


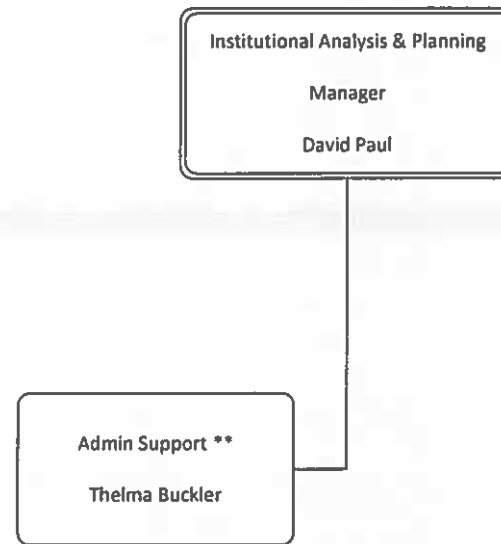


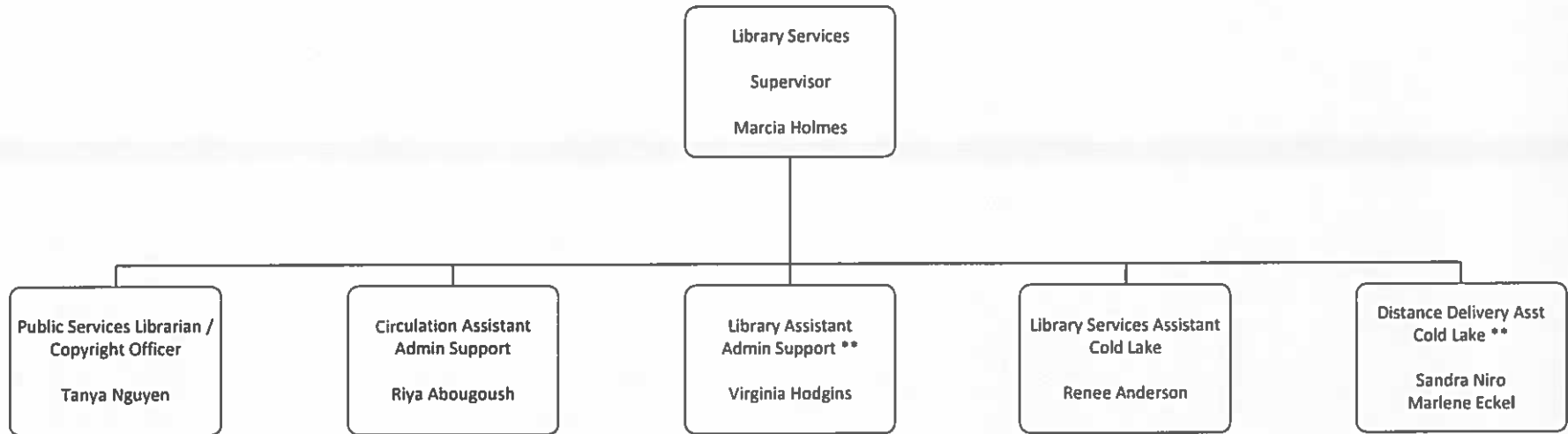
Term *
 Casual **

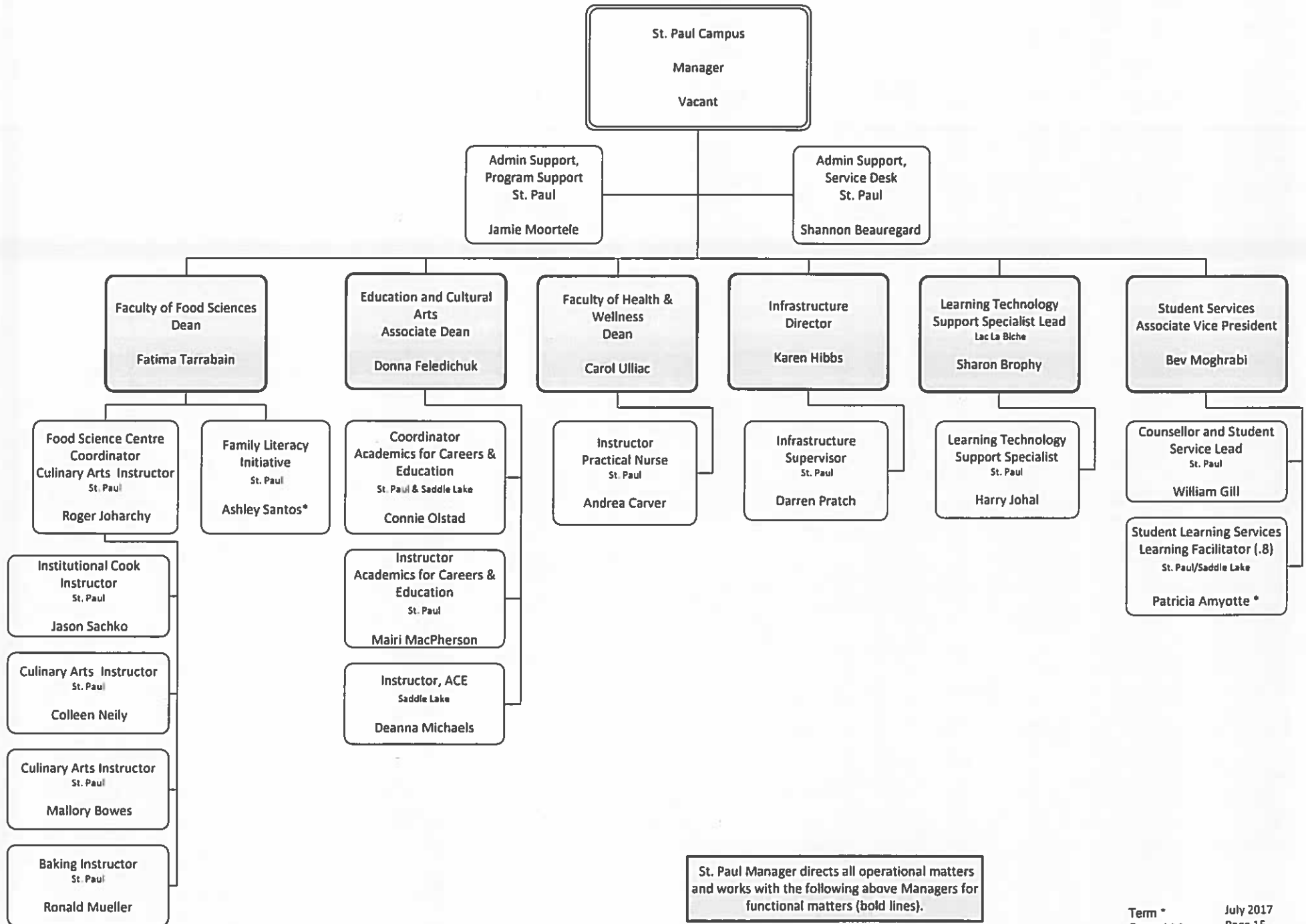
Dotted line represents shared reporting.
 1) Jamie Moortele - Reports to St. Paul Manager for operational matters and reports to Associate VP Student Services/Registrar for functional matters



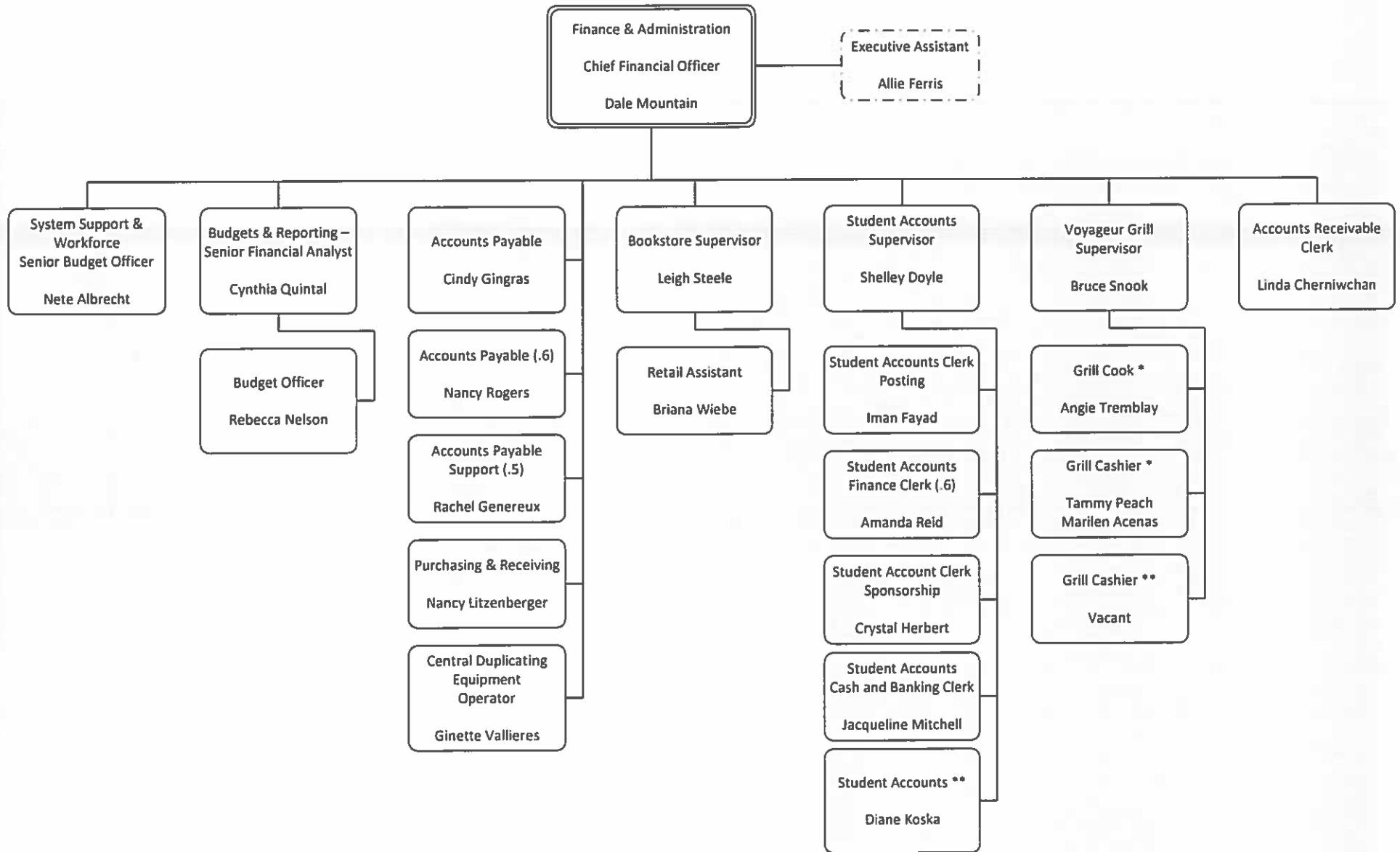






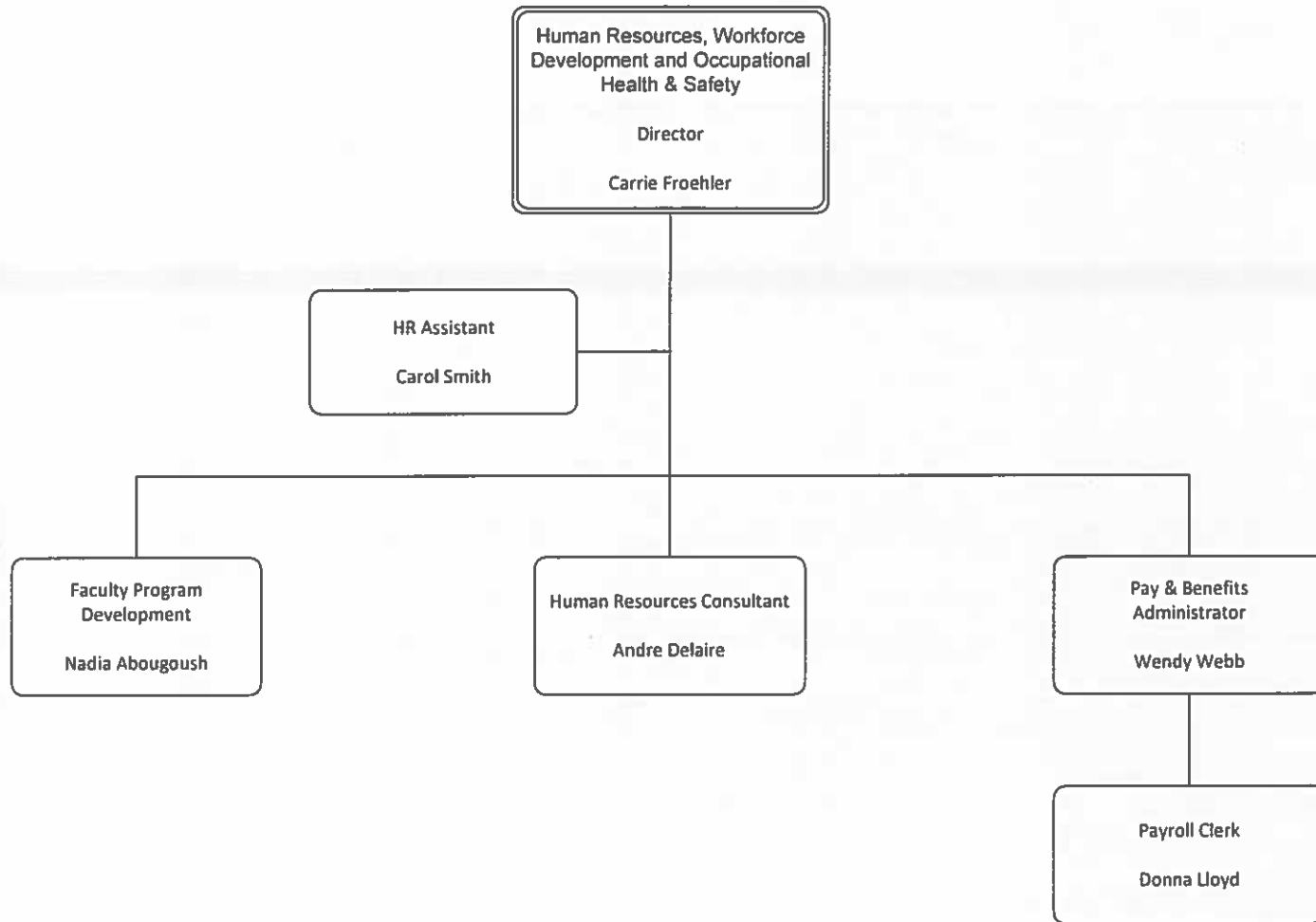


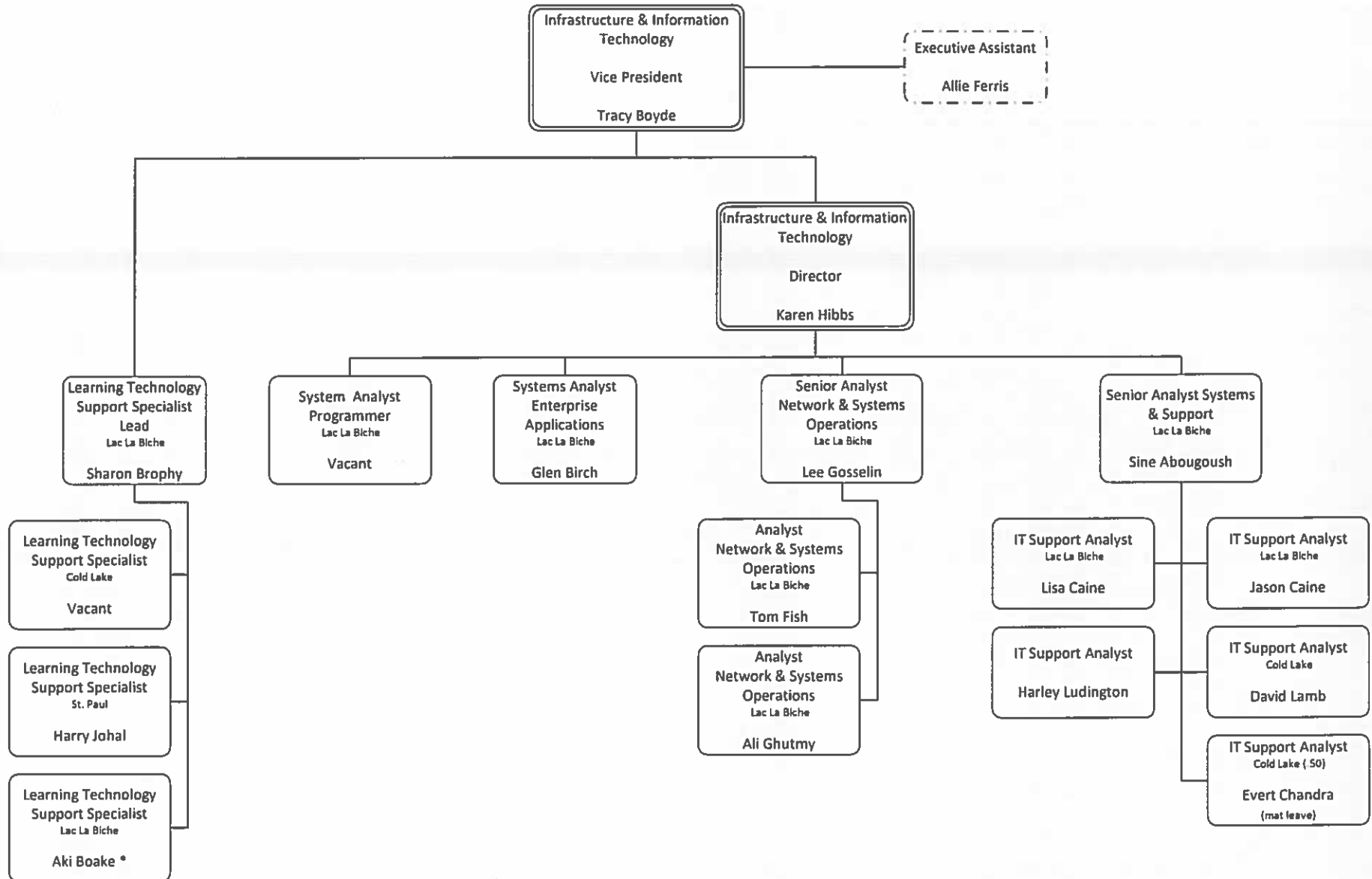
St. Paul Manager directs all operational matters and works with the following above Managers for functional matters (bold lines).



Term *
Casual **

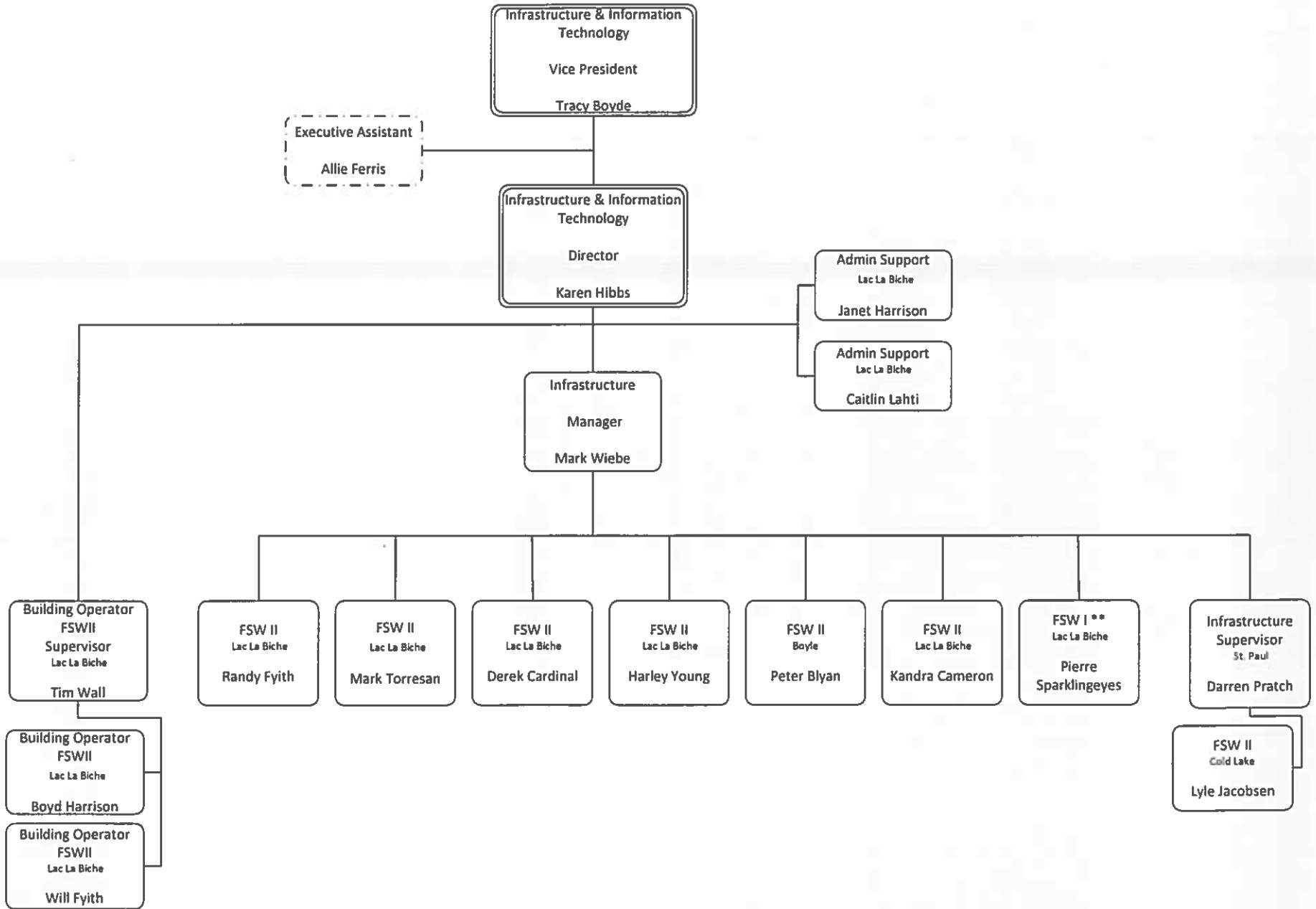
Dotted line represents shared reporting:
 Executive Assistant – Shared .5 Finance and Administration .5 VP Infrastructure & Information Technology & Moodle Support





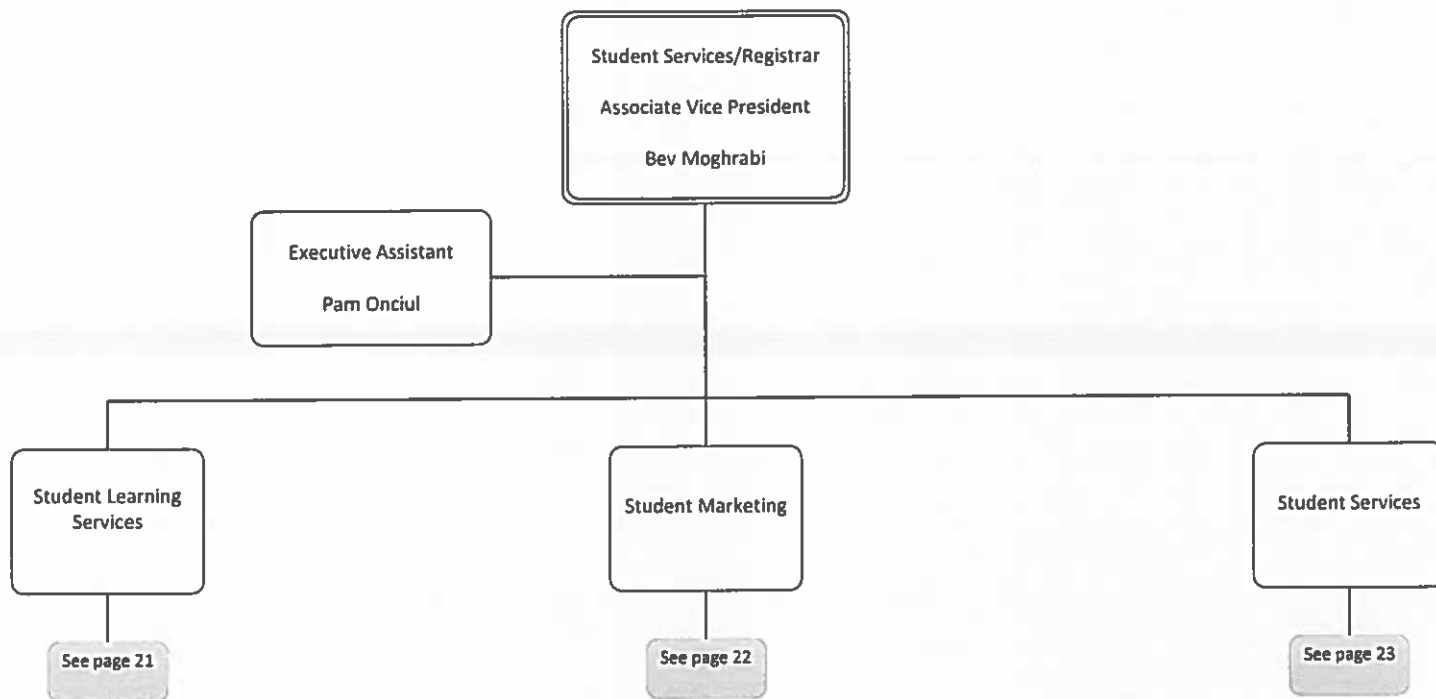
Term *
Casual **

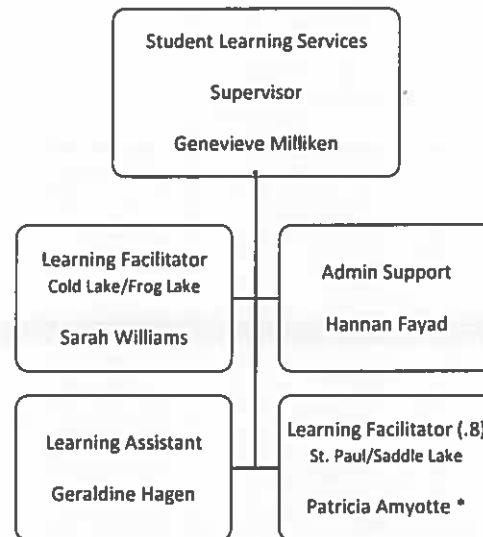
Dotted line represents shared reporting:
) Executive Assistant – Shared .5 Finance and Administration .5 VP Infrastructure & Information Technology & Moodle Support

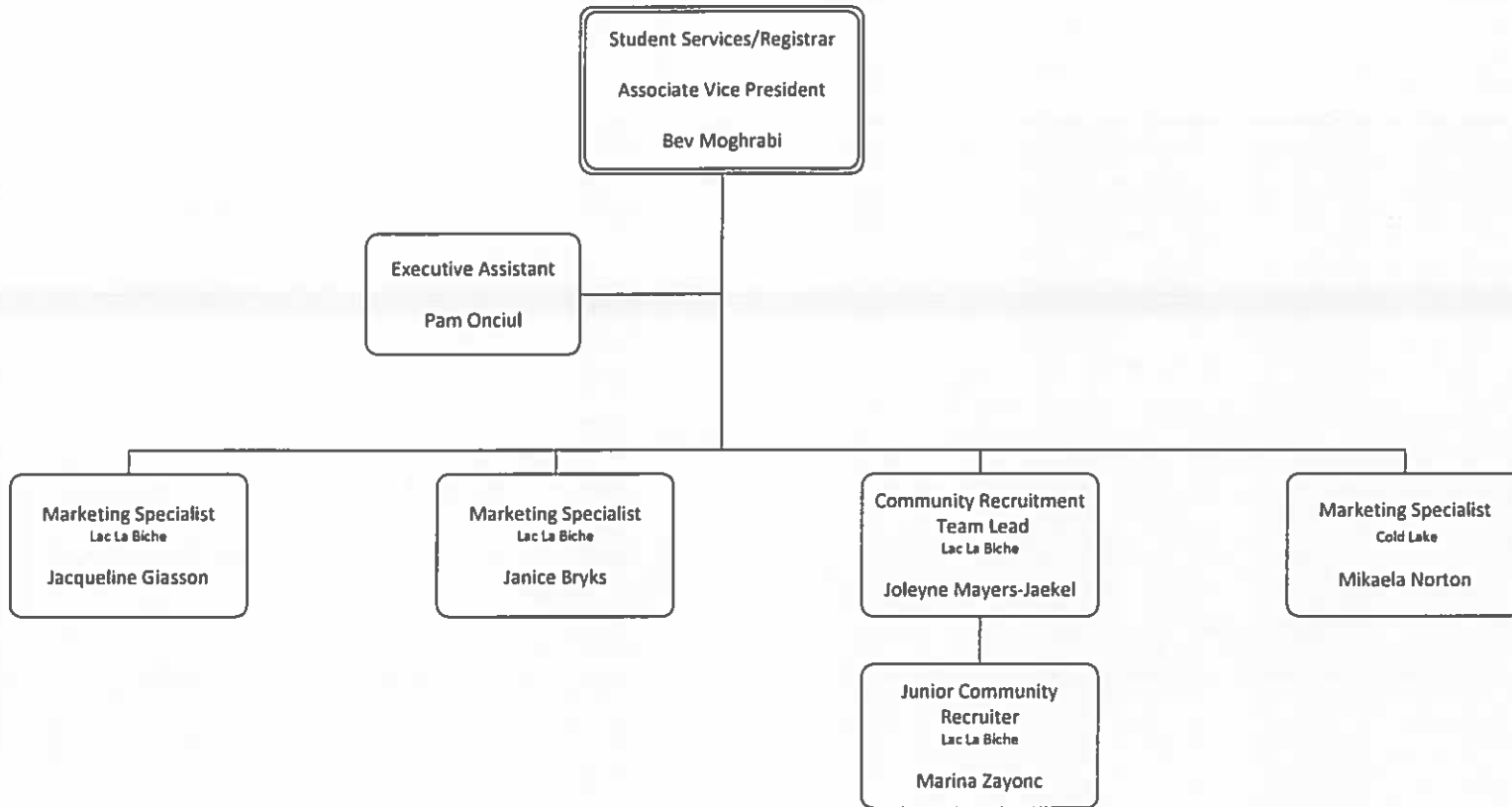


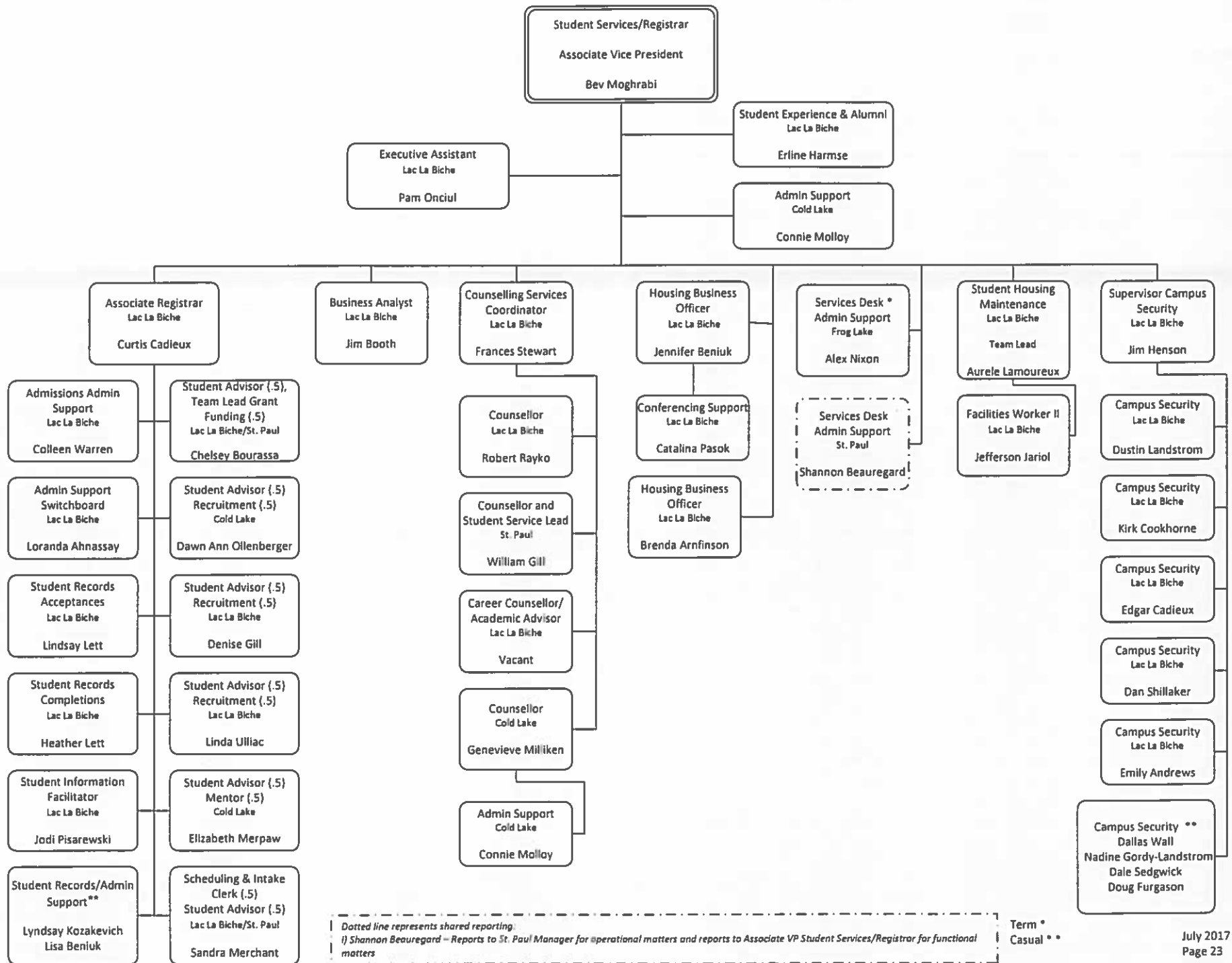
Term *
Casual **

Dotted line represents shared reporting;
 *) Executive Assistant – Shared .5 Finance and Administration .5 VP Infrastructure & Information Technology & Moodle Support









Dotted line represents shared reporting:
 1) Shannon Beauregard – Reports to St. Paul Manager for operational matters and reports to Associate VP Student Services/Registrar for functional matters

Term *
Casual **