

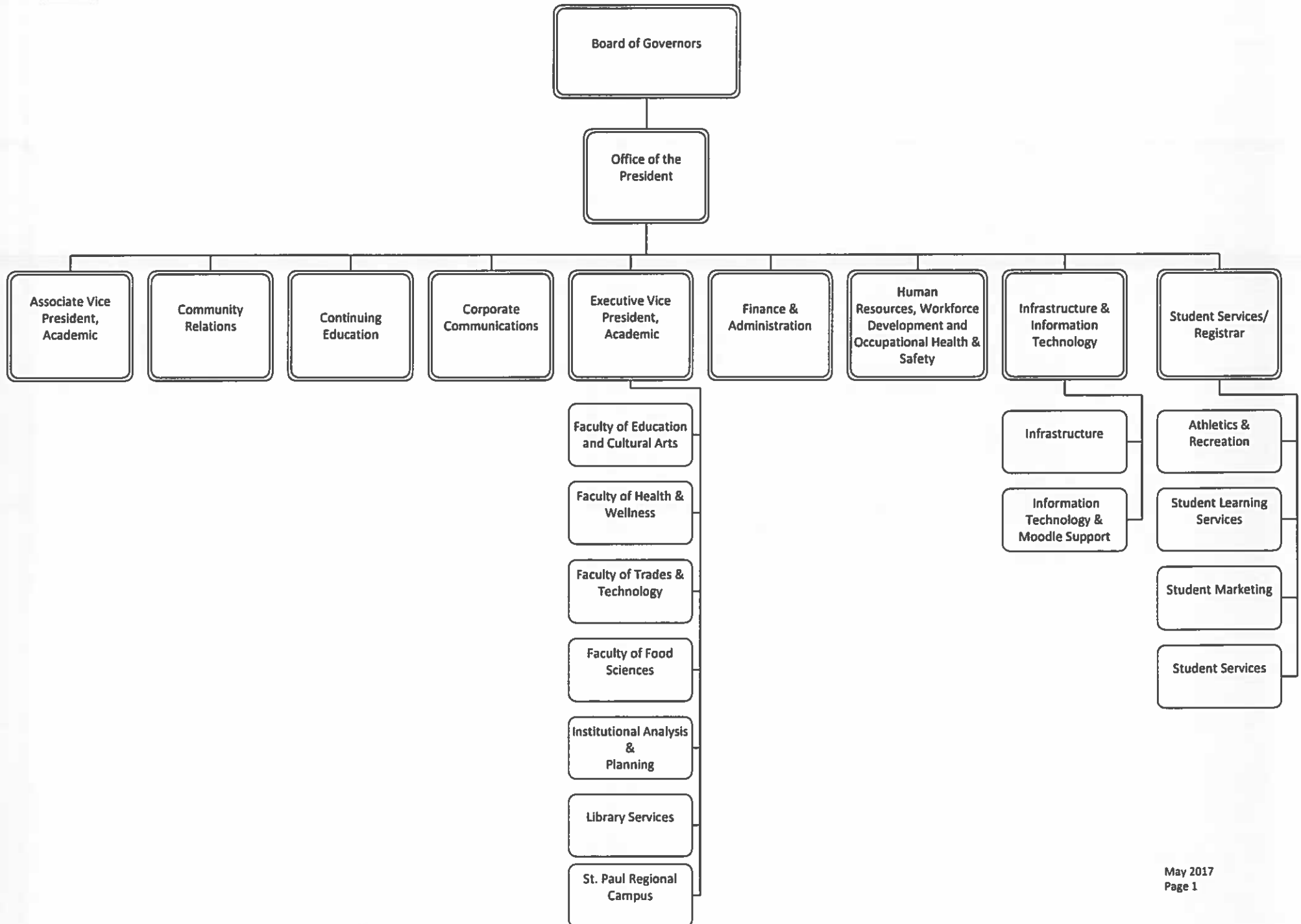


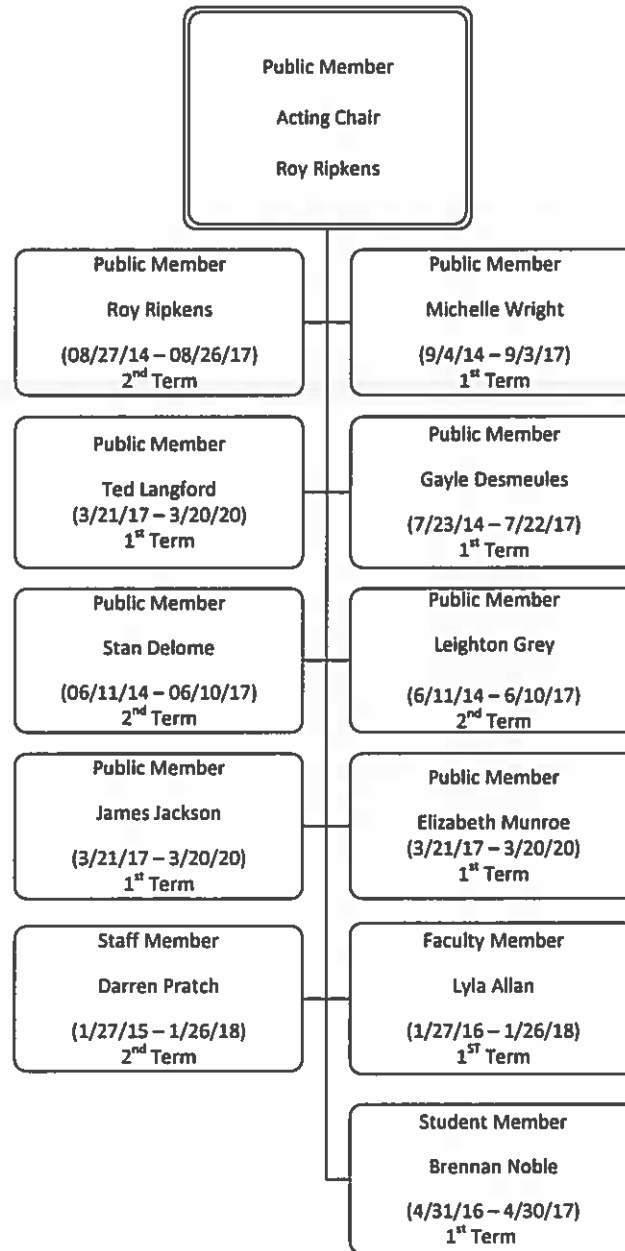
PORTAGE COLLEGE

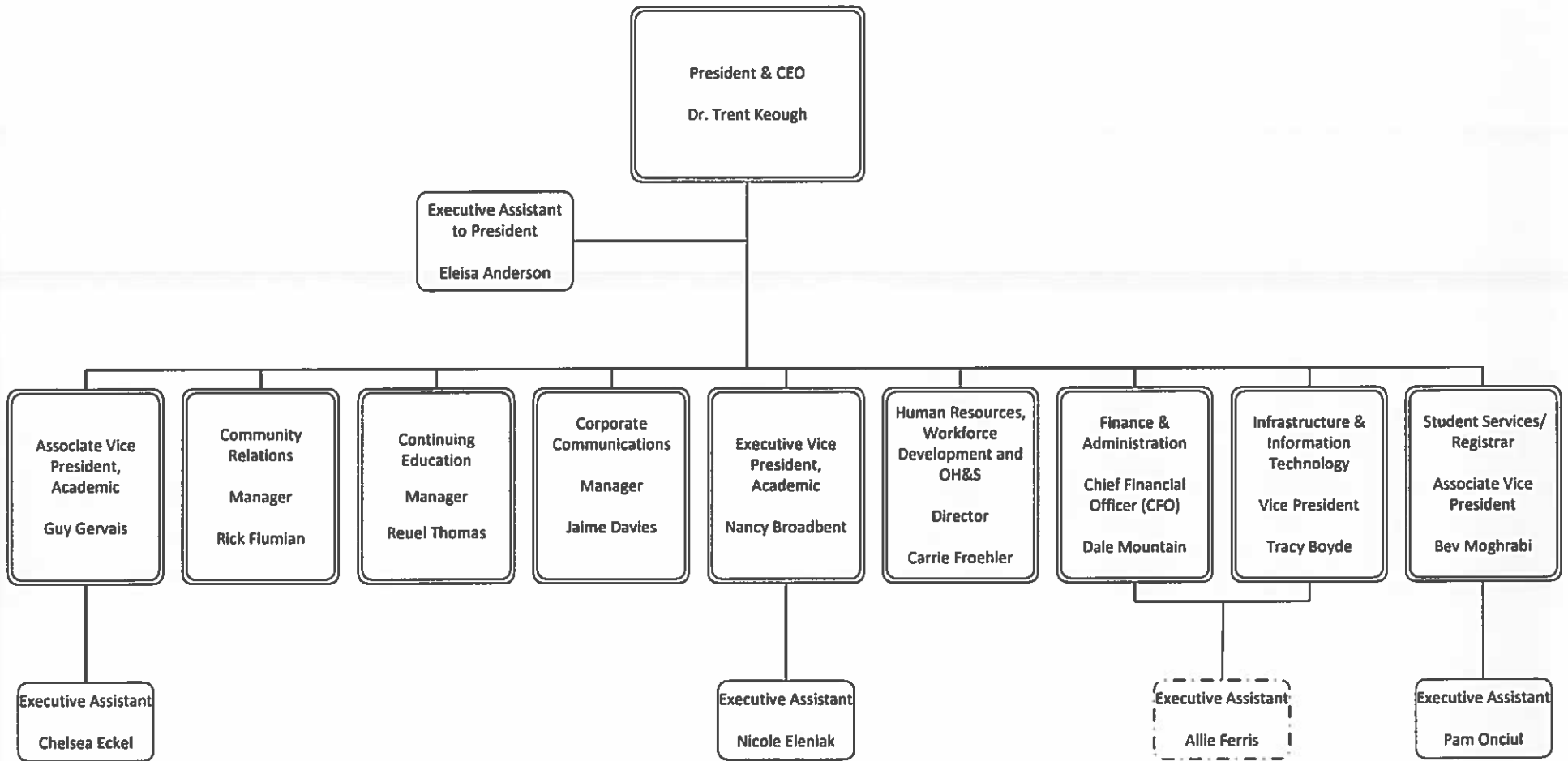
Organizational Charts

May 2017

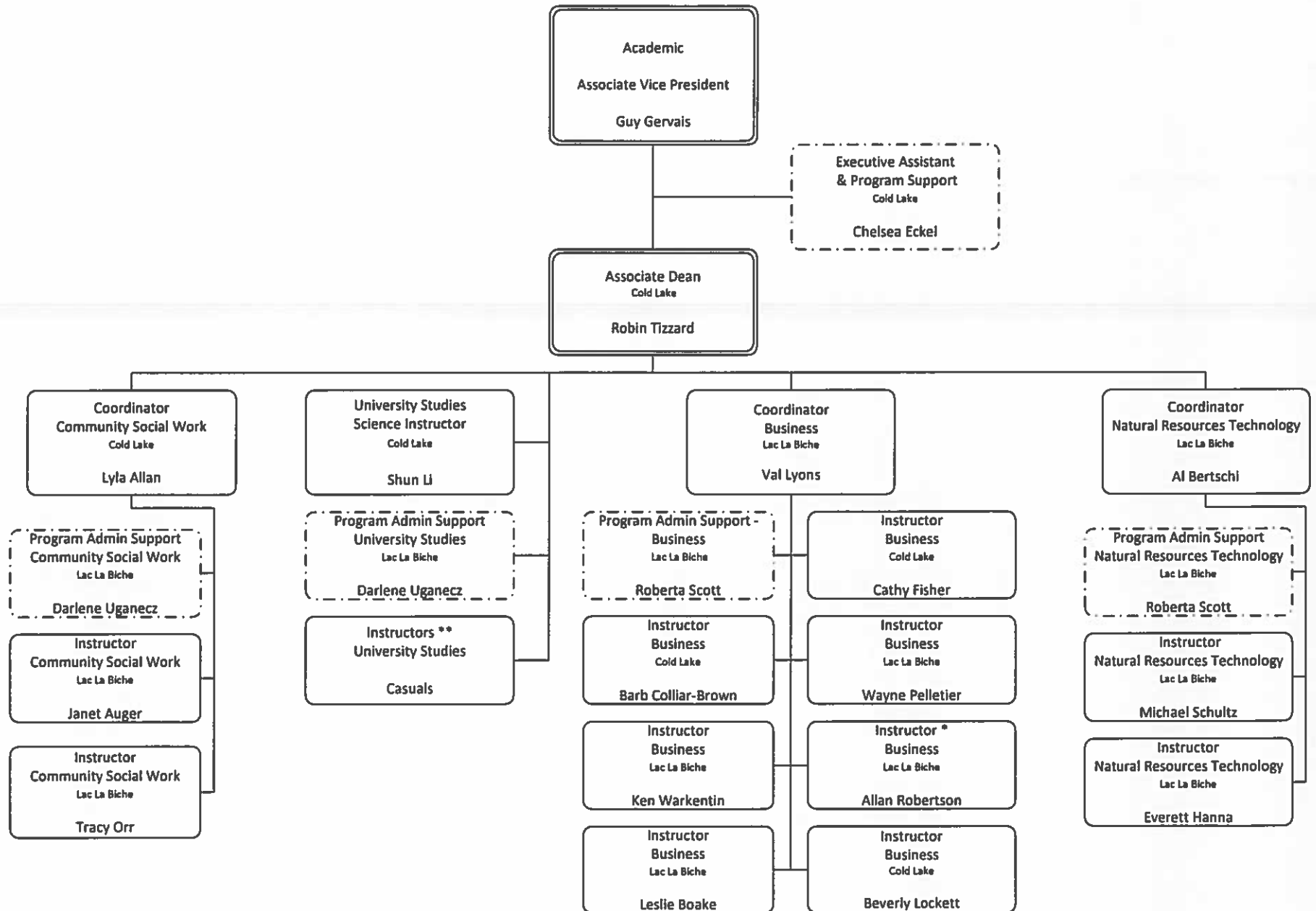
1. ORGANIZATIONAL STRUCTURE	1
2. BOARD OF GOVERNORS	2
3. OFFICE OF THE PRESIDENT	3
A. ASSOCIATE VICE PRESIDENT, ACADEMIC	4
B. CONTINUING EDUCATION	5
C. CORPORATE COMMUNICATIONS	6
D. EXECUTIVE VICE PRESIDENT, ACADEMIC	7
I. Faculty of Education and Cultural Arts	8
II. Faculty of Food Sciences	9
III. Faculty of Health & Wellness	10
IV. Faculty of Trades & Technology	11
V. Institutional Analysis and Planning	12
VI. Library Services	13
VII. St. Paul Regional Campus	14
E. FINANCE & ADMINISTRATION	15
F. HUMAN RESOURCES, WORKFORCE DEVELOPMENT AND OCCUPATIONAL HEALTH AND SAFETY	16
G. INFRASTRUCTURE & INFORMATION TECHNOLOGY & MOODLE SUPPORT, VICE PRESIDENT	
I. Information Technology & Moodle Support	17
II. Infrastructure	18
H. STUDENT SERVICES & REGISTRAR	19
I. Athletics & Recreation	20
II. Student Learning Services	21
III. Student Marketing	22
IV. Student Services	23

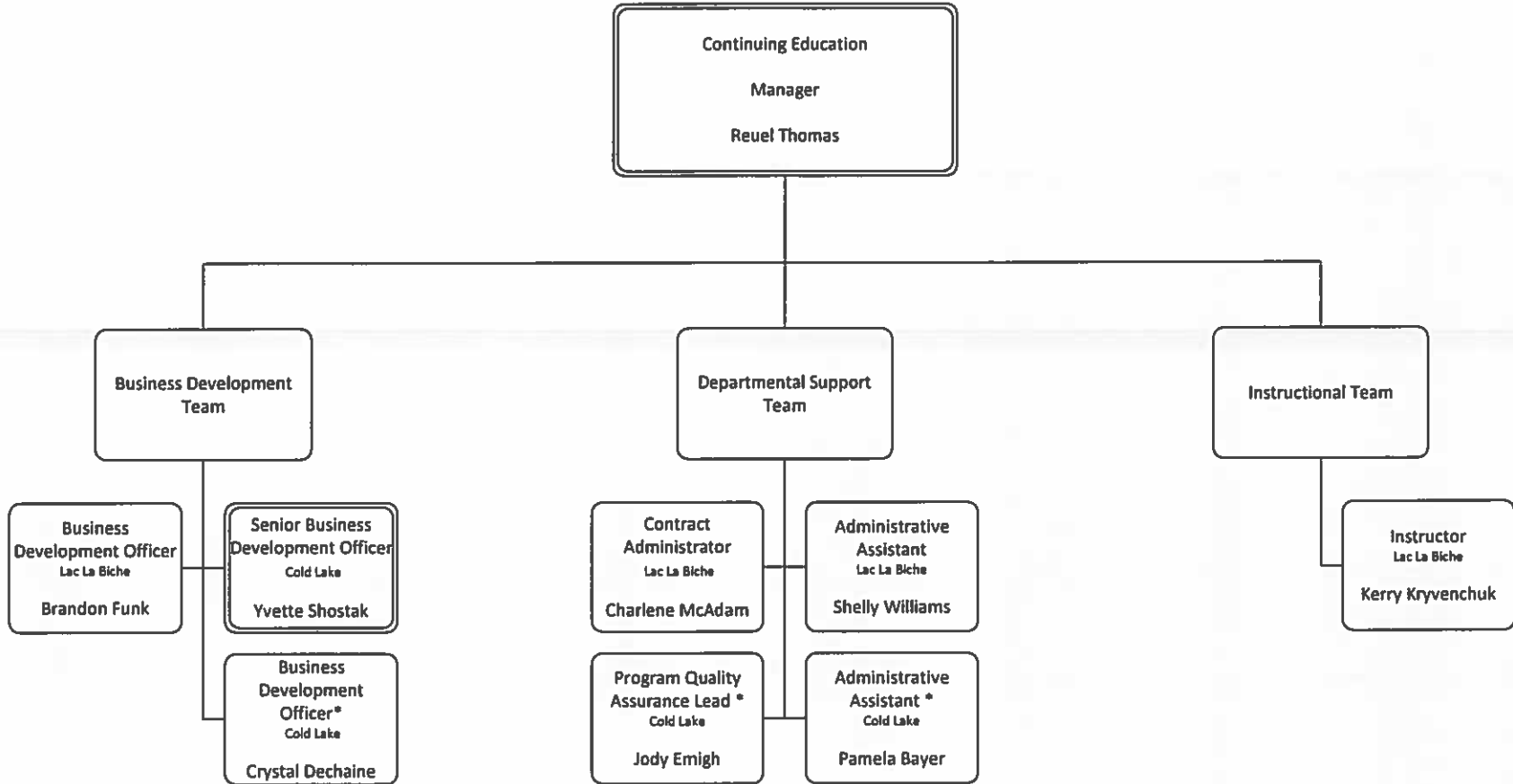


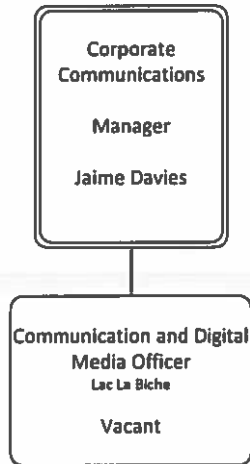


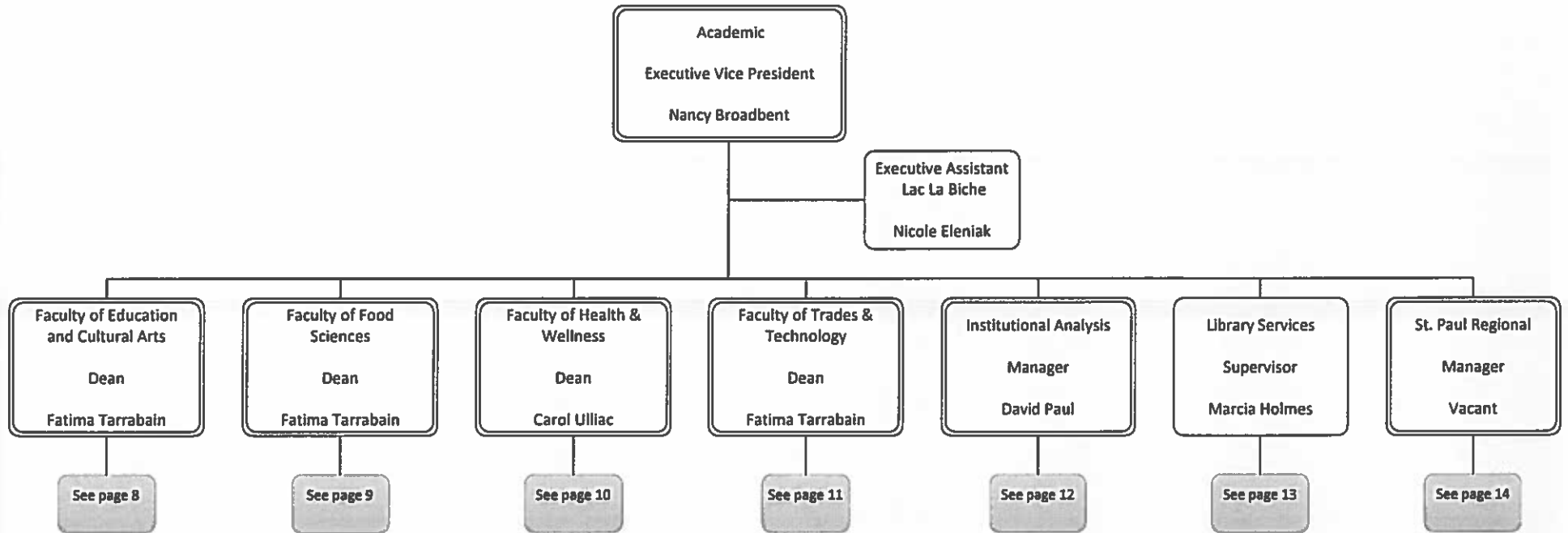


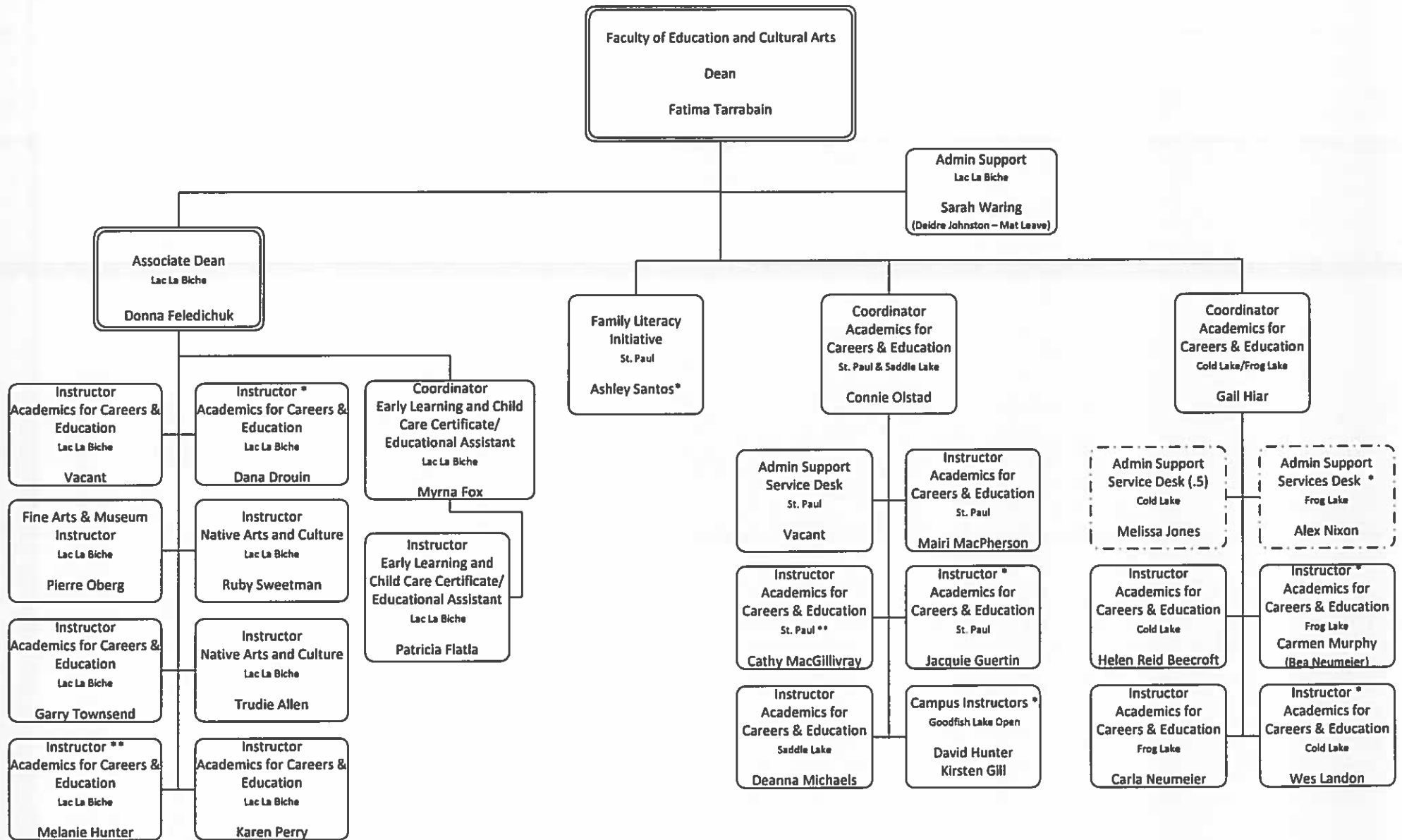
Dotted line represents shared reporting:
) Executive Assistant – Shared .5 Finance and Administration .5 VP Infrastructure & Information Technology & Moodle Support









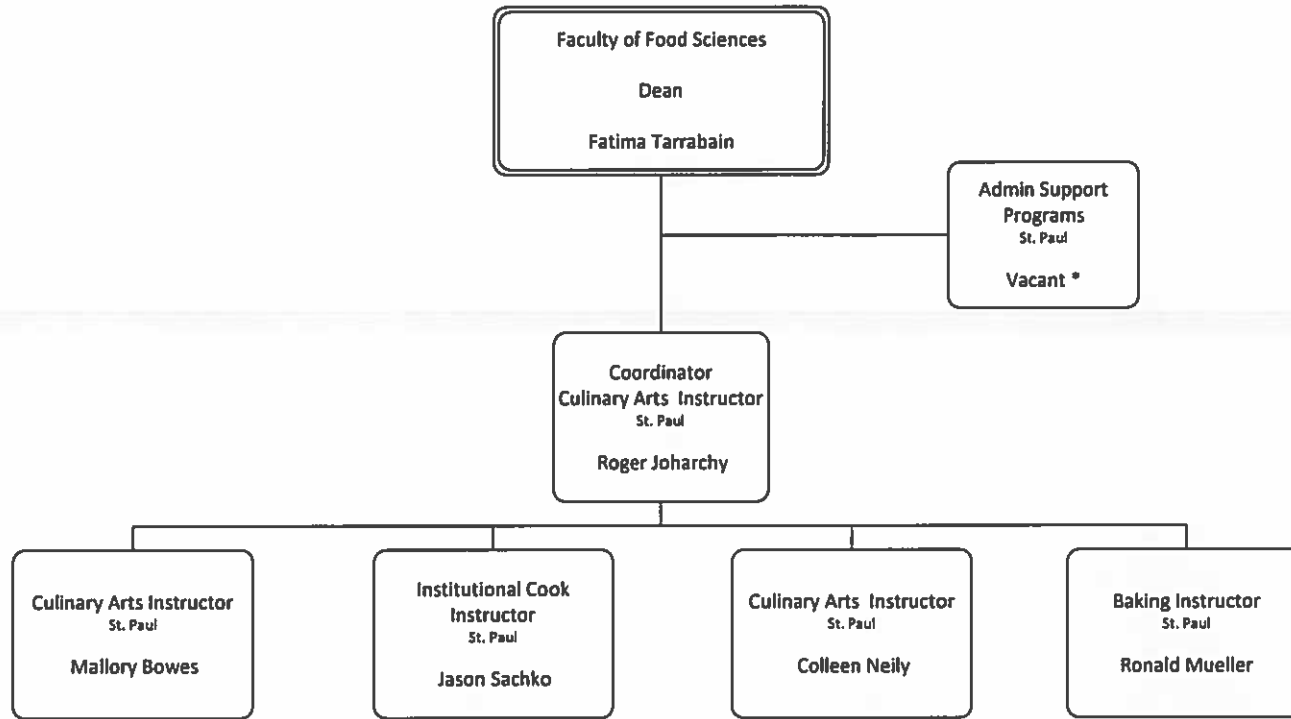


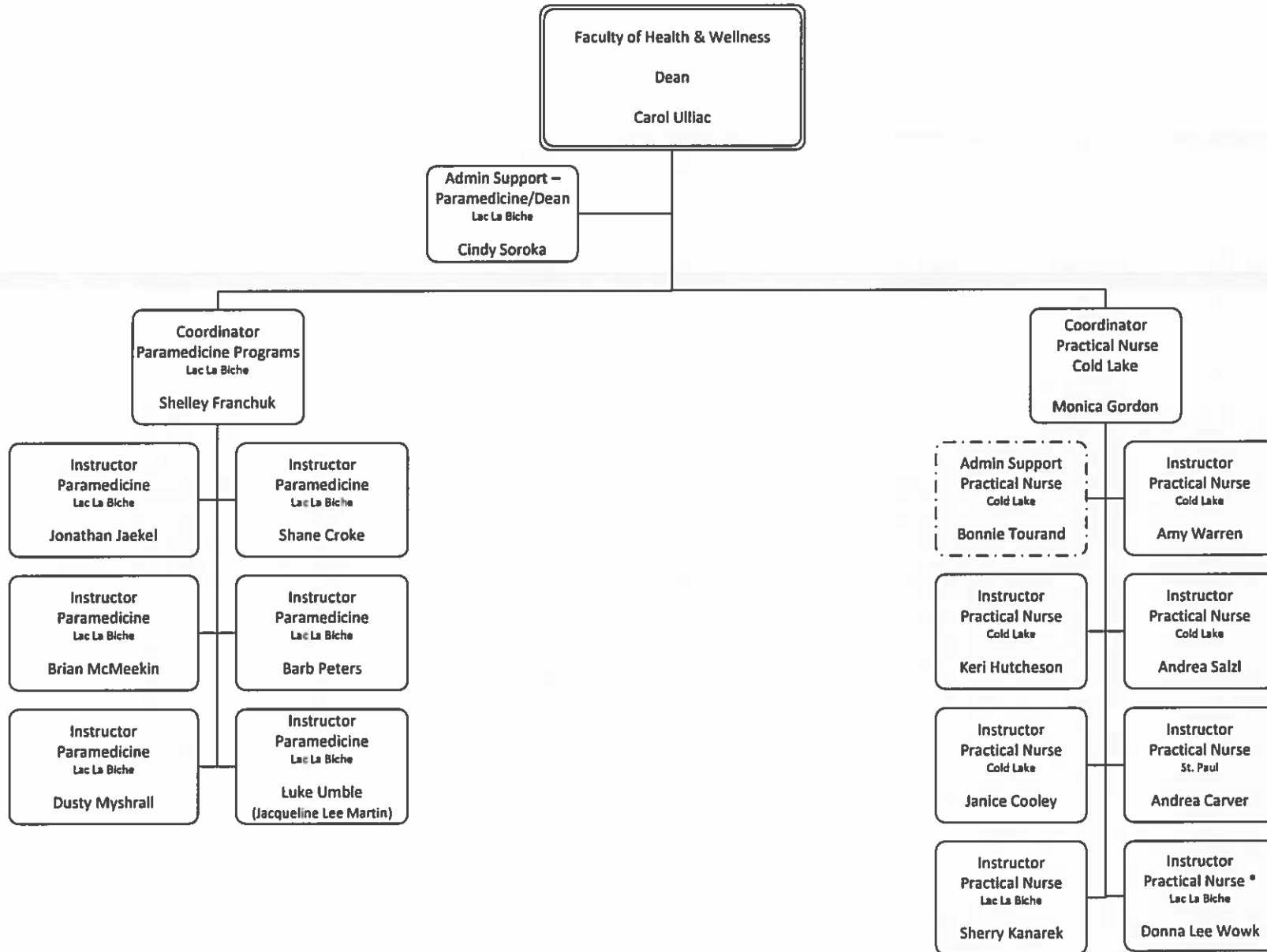
Term *
Casual **

Dotted line represents shared reporting:

i) Melissa Jones - .5 Academic for Career and Education and .5 Student Services

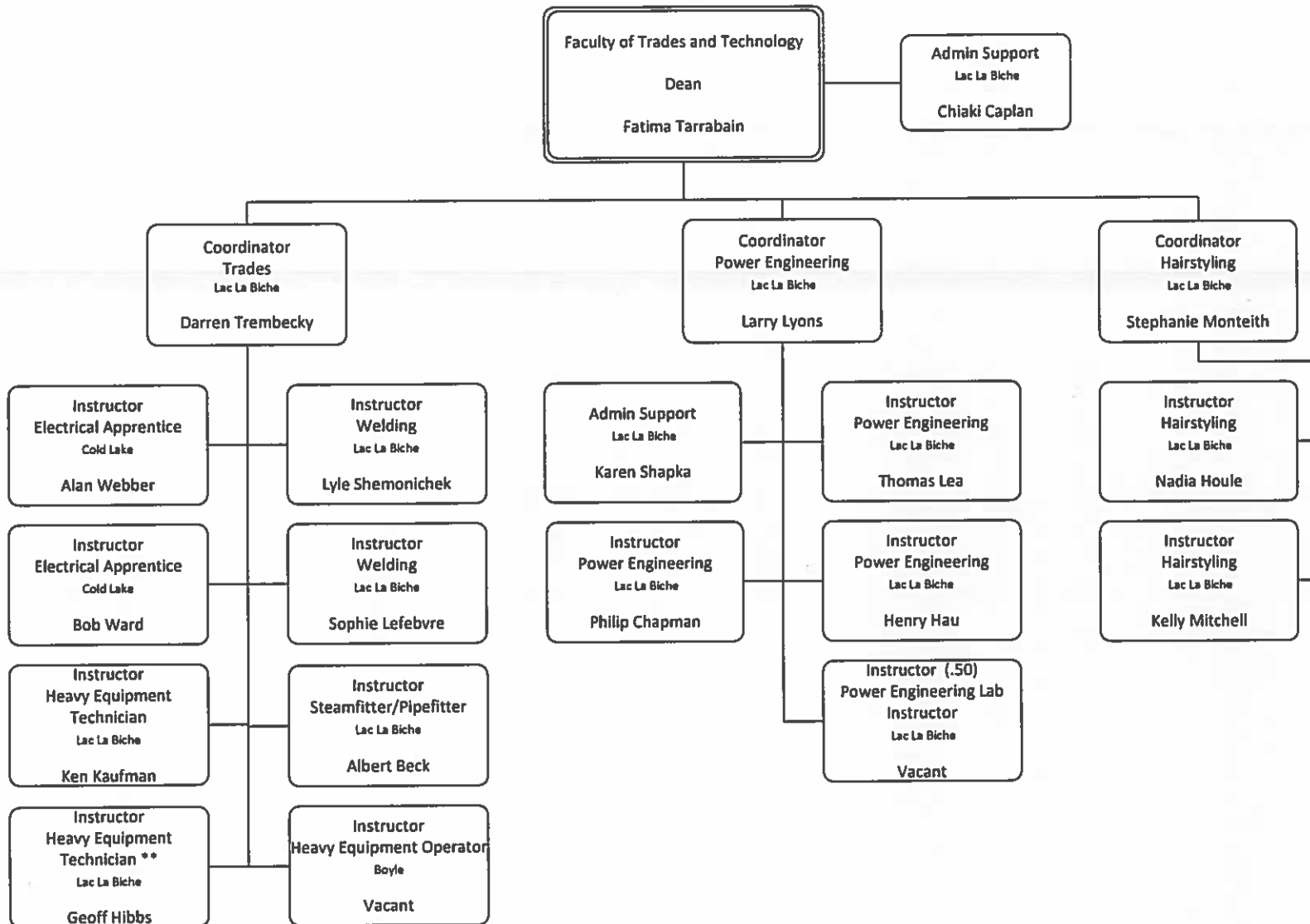
ii) Alex Nixon - Shared with Faculty of Trades and Technology, Continuing Education and Academic for Career and Education - Reports directly to Associate Vice President Bev Moghrabi

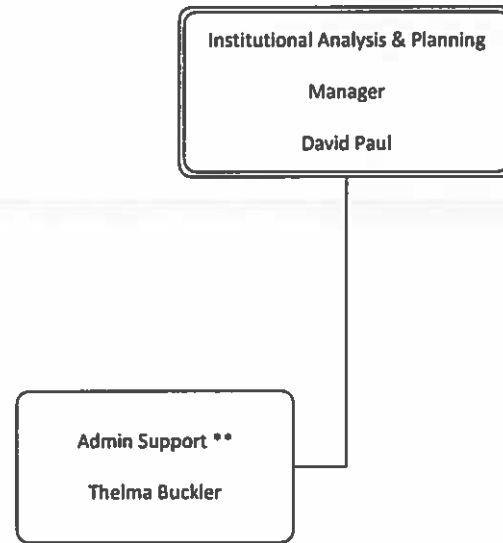


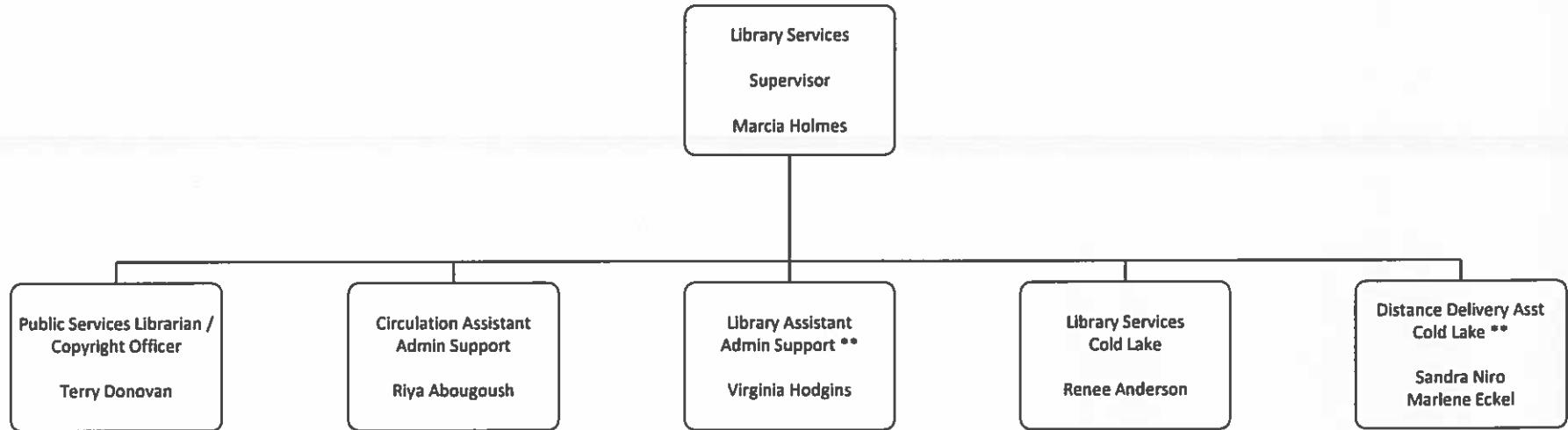


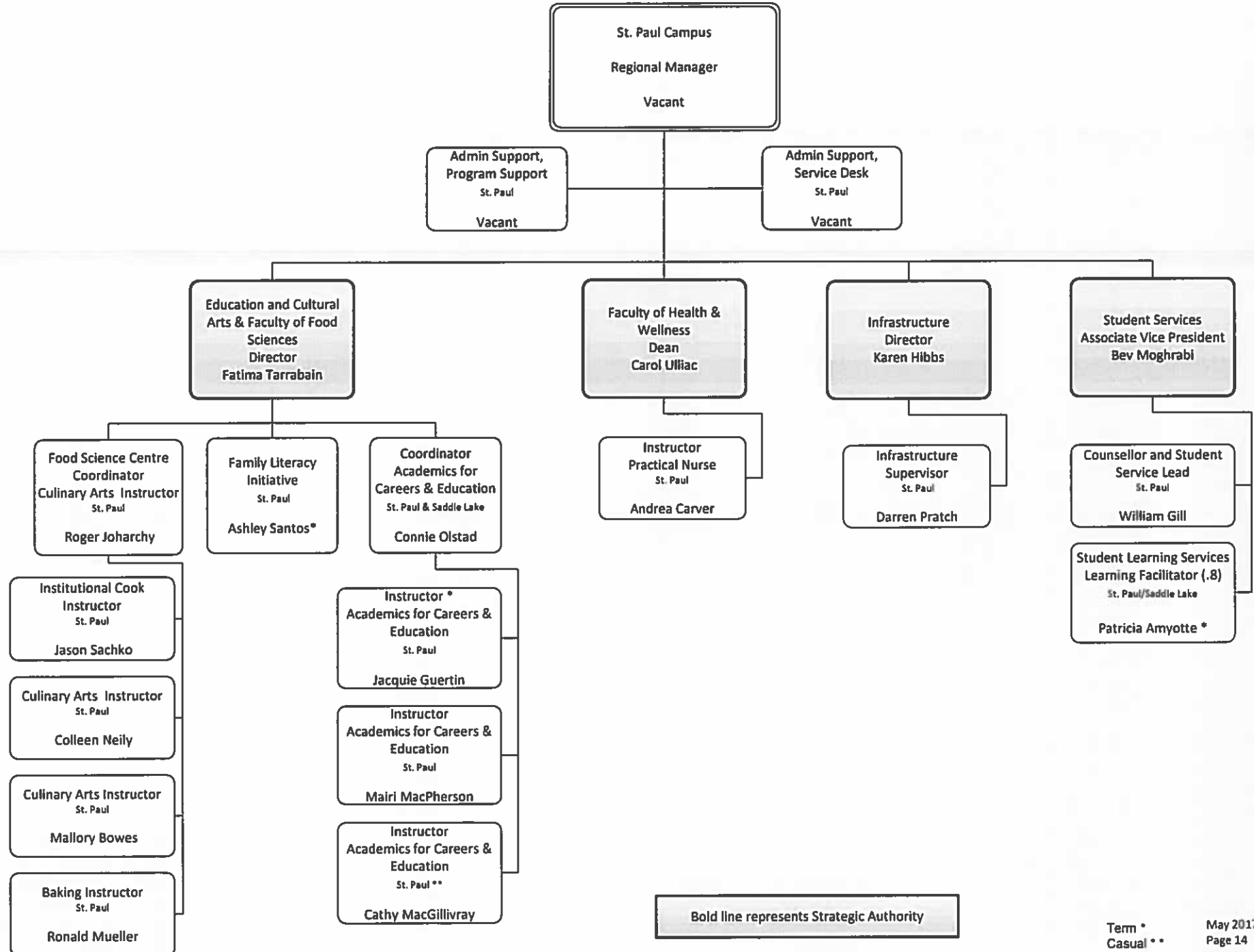
Term *
Casual **

Dotted line represents shared reporting:
Bonnie Tourand – Faculty of Health & Wellness and Trades and Technology, Electrical

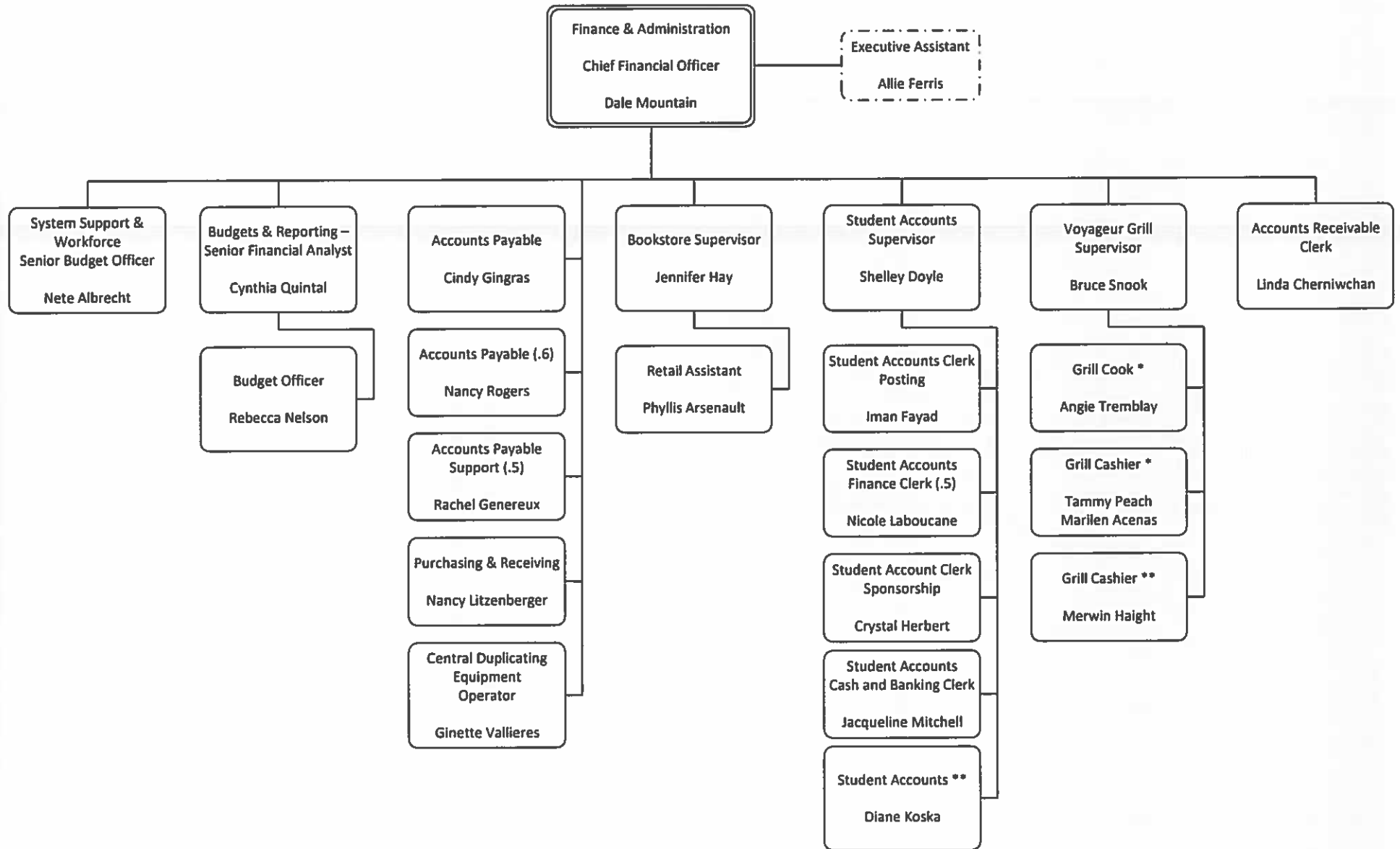






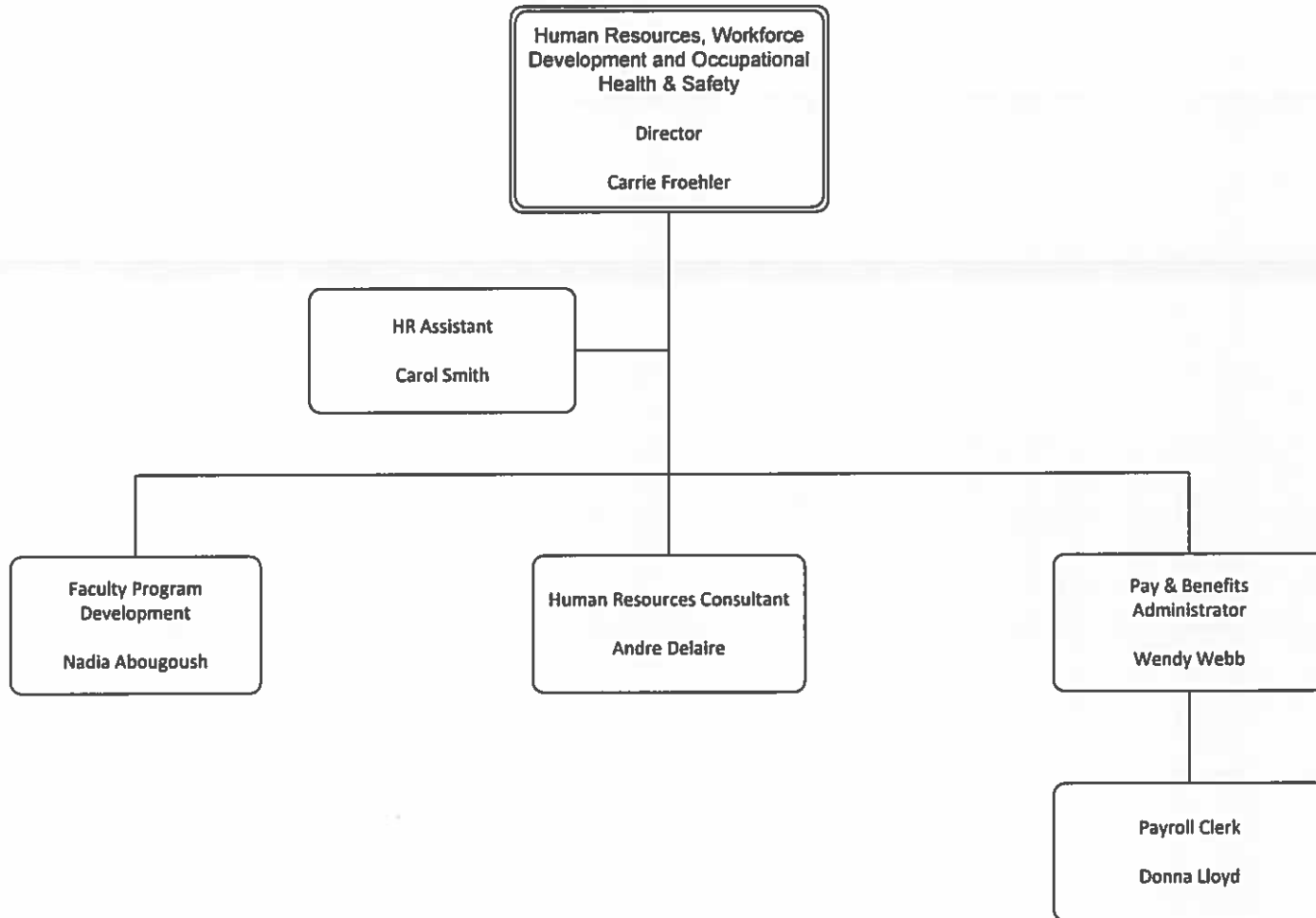


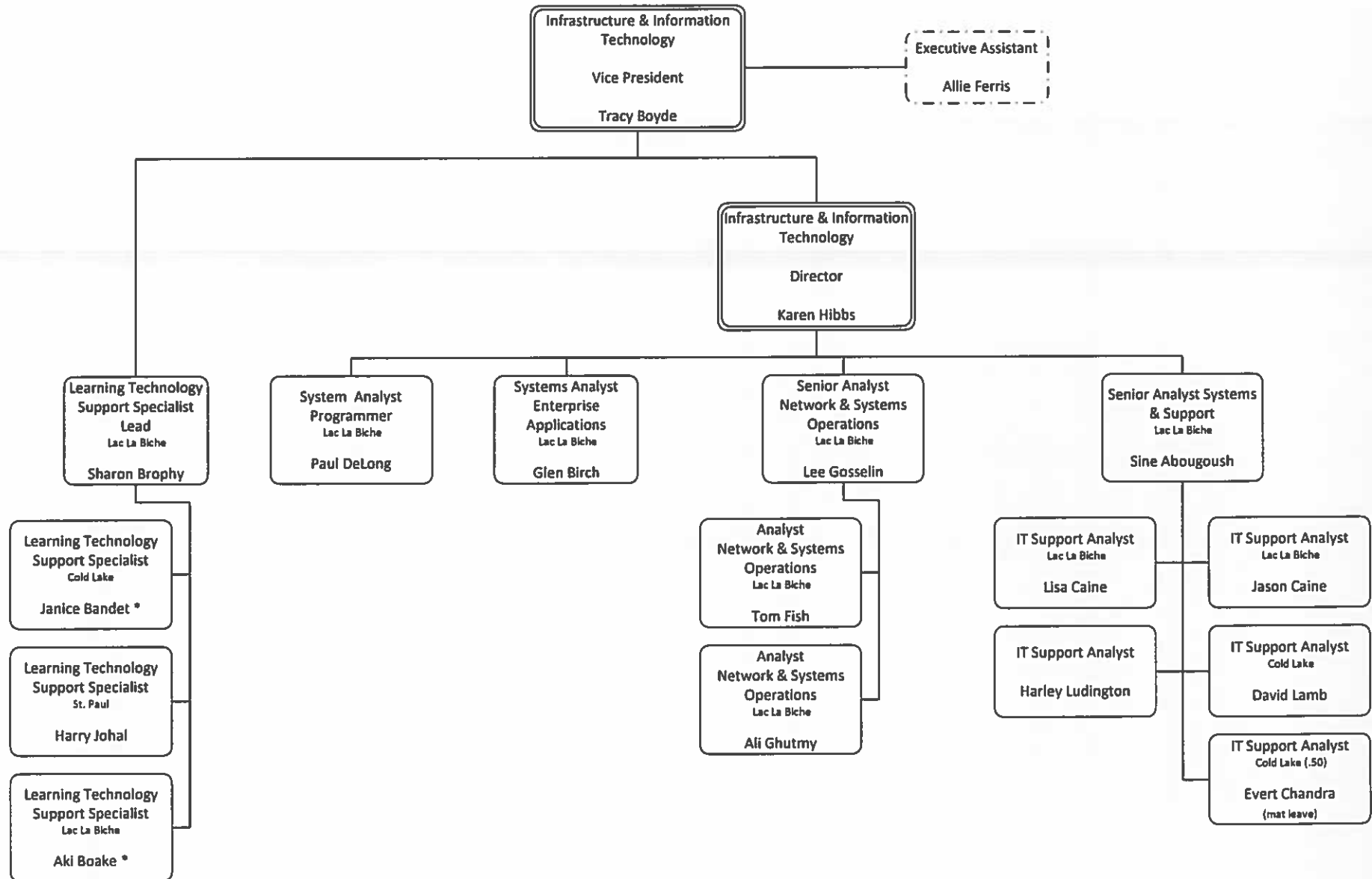
Bold line represents Strategic Authority



Term *
Casual **

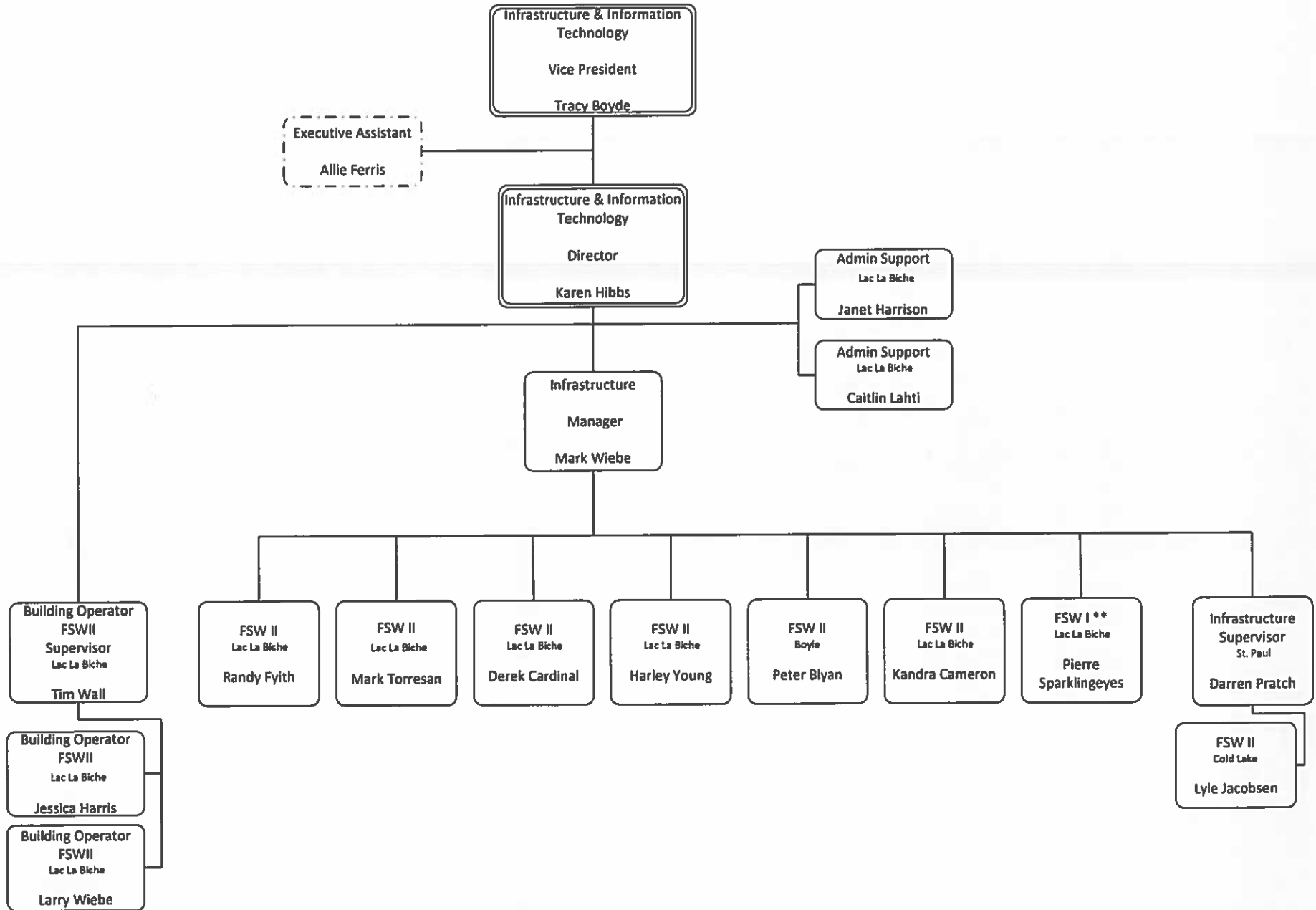
Dotted line represents shared reporting:
 1) Executive Assistant – Shared .5 Finance and Administration .5 VP Infrastructure & Information Technology & Moodle Support





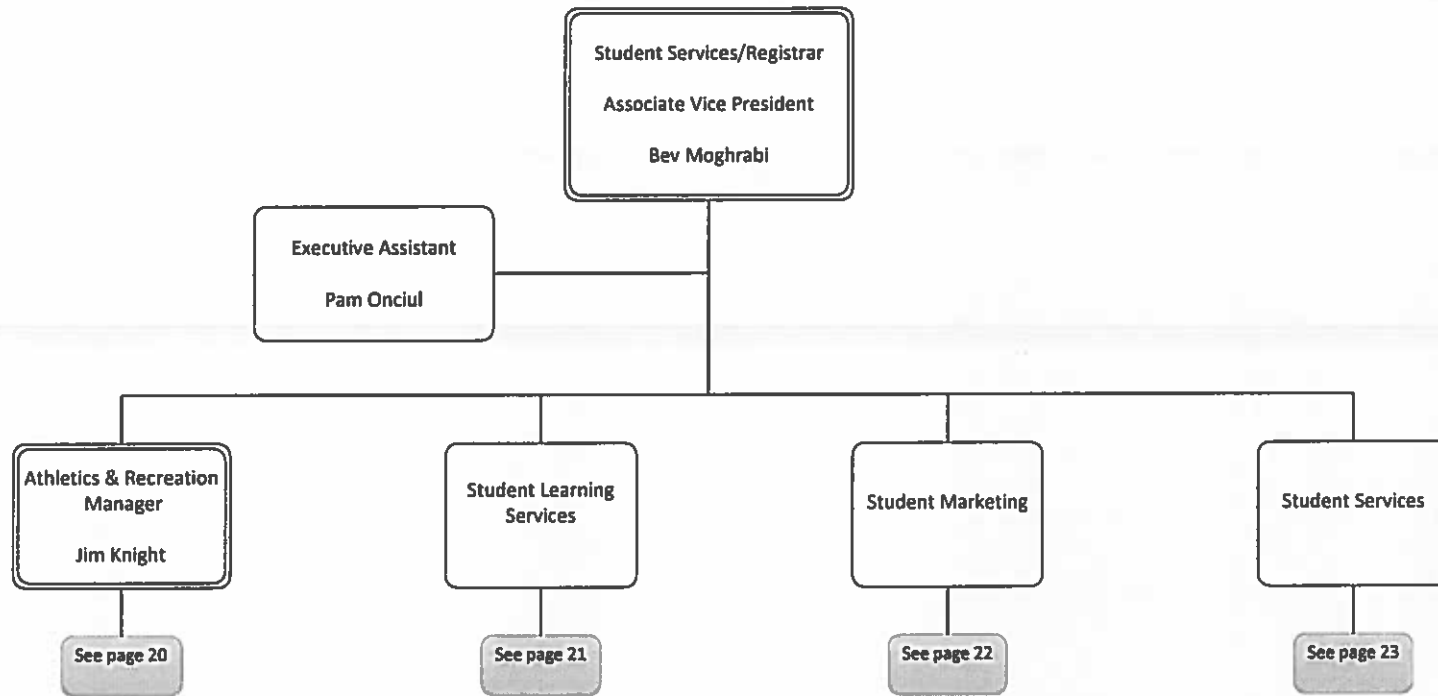
Term *
Casual **

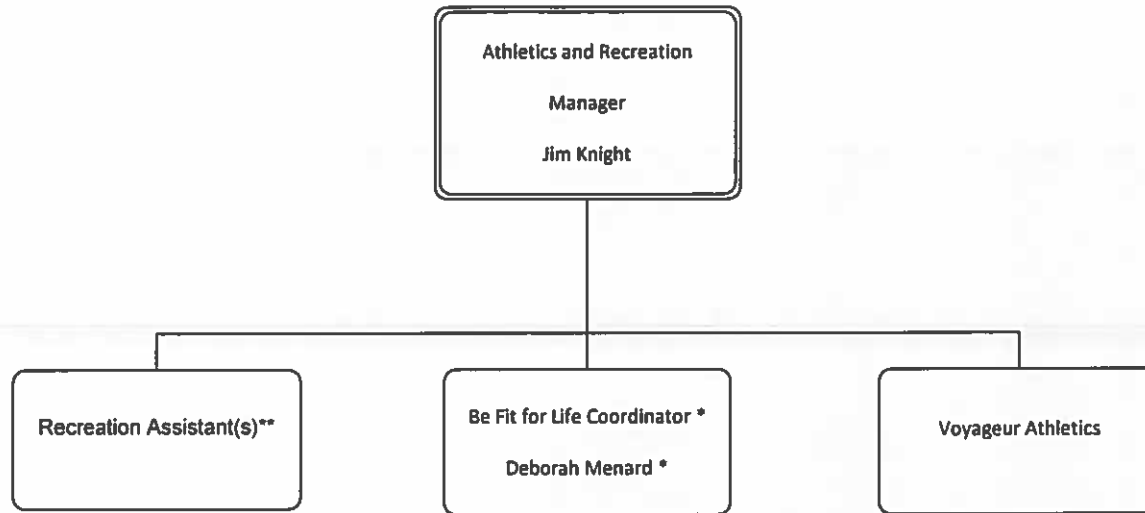
Dotted line represents shared reporting;
 *) Executive Assistant – Shared .5 Finance and Administration .5 VP Infrastructure & Information Technology & Moodle Support

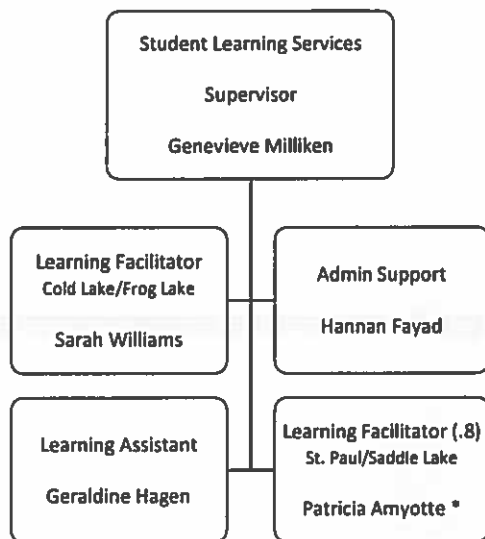


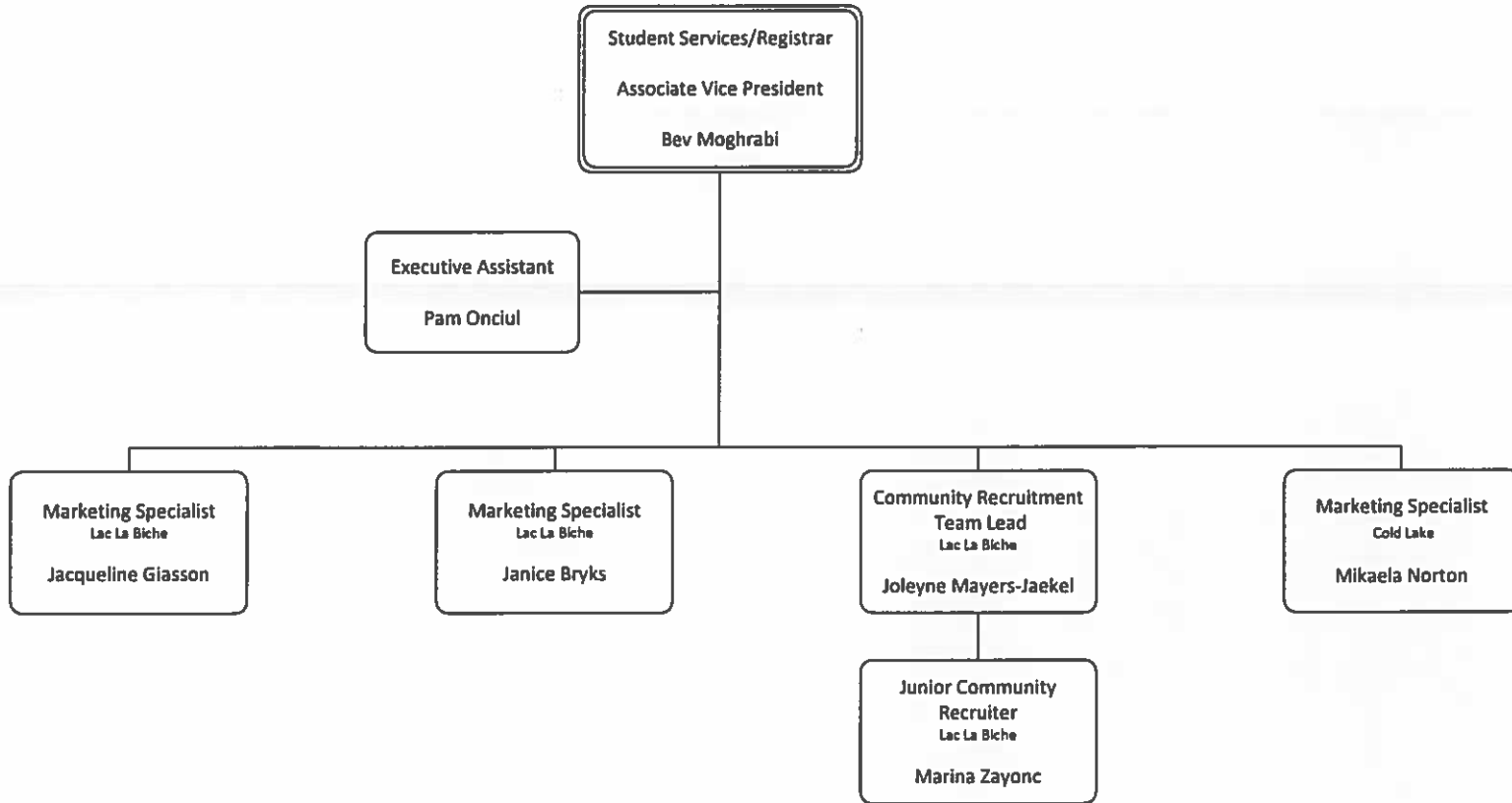
Term *
Casual **

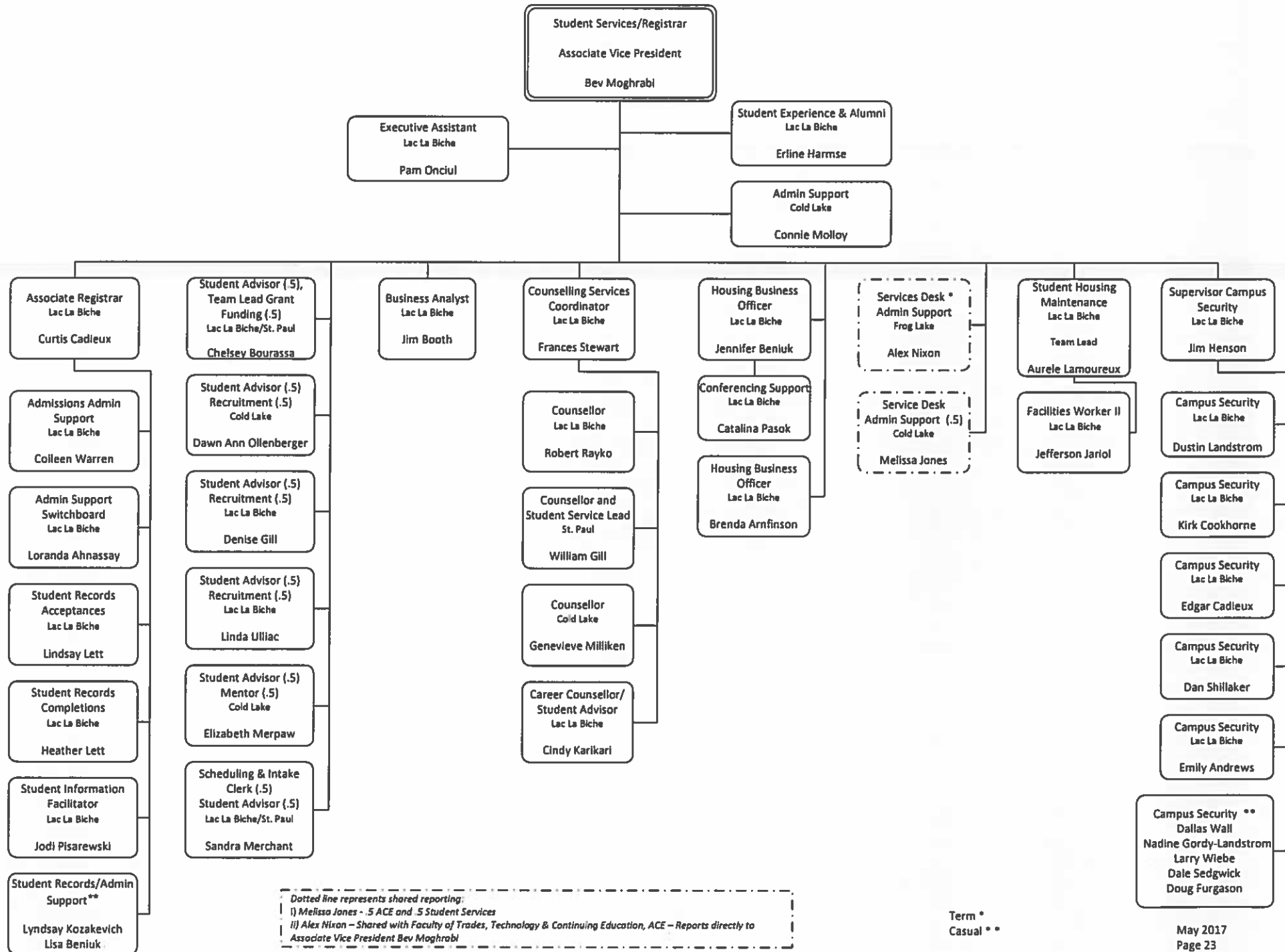
Dotted line represents shared reporting:
 *) Executive Assistant – Shared .5 Finance and Administration .5 VP Infrastructure & Information Technology & Moodle Support











Dotted line represents shared reporting:
 i) Melissa Jones - .5 ACE and .5 Student Services
 ii) Alex Nixon - Shared with Faculty of Trades, Technology & Continuing Education, ACE - Reports directly to Associate Vice President Bev Moghrabi

Term *
Casual **