

PORTAGING OUR STUDENTS TO SUCCESS

Portage College works to maximize local learning opportunities that support economic growth and human development in our campuses in Lac La Biche, Cold Lake, St. Paul, Boyle, Frog Lake, First Nation, Saddle Lake, Cree Nation and Whitefish Lake, First Nation #128.

In addition, we provide outreach community-based programs to many other communities in our region. Portage College Stewards adult education and training in consultation with our stakeholders including community leadership, secondary schools and industry.

We influence student success and bring opportunities to our region that would not otherwise exist in rural Alberta.

To continue to build on our 50-year history of success, sustainable funding for our students and the College is critical.

70% of our graduates are employed in the region

88% of students would recommend Portage College to others

99% of employers surveyed say they would hire a Portage College graduate

Portage College contributes \$110 million annually to the communities

1/40 jobs in the region are due to Portage College

AND PORTAGE COLLEGE IS CRITICAL TO THE REGION'S ECONOMY

There is strong return on investment for the dollar's Portage College receives

STUDENTS ARE SUCCESSFUL



STUDENTS ASPIRE TO ENGAGE IN LEARNING

CHALLENGES FOR STUDENTS IN RURAL ALBERTA



Transportation - no driver's licence - no vehicle - public transportation is non-existent

Post-secondary is unaffordable for students from low-income families

Aversion to accumulating student debt

First generation learners - lack experience - no role models - no support for pursuing learning

Students need more time to complete programs - + family challenges - - academic readiness

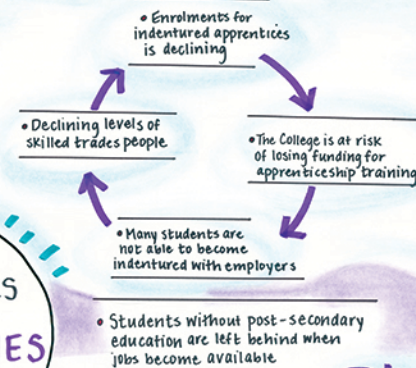
801 2001-2002

243 2017-2018

Student enrolments in our foundational and career entry programming have decreased - Alberta Works funding eligibility criteria adjusted - number of students has declined

THERE ARE STUDENTS IN NORTHEASTERN ALBERTA NOT BEING ADEQUATELY SERVED

CHALLENGES FOR COMMUNITIES IN RURAL ALBERTA



First Nations and Métis communities are unable to fund all of their learners to engage in post-secondary education

Alberta lags behind Canada in terms of post-secondary engagement 18% : 24%

While in demand, most community-based programs are not sustainable and cannot be expanded - third party cost-recovery funding

OUR STUDENT DEMOGRAPHICS ARE UNIQUE

- 45% Indigenous
- 19% direct from high school
- Average age is 28
- 51% married
- 16% female single parents
- 89% of our students apply to Portage College as their first choice



SERVICES PROVIDED TO OUR STUDENTS



I enjoy the small class sizes!

I enjoy the extensive wrap-around services!

I enjoy learning in my home community where I have family and community support!

PERSONALIZED SERVICES ~ HOLISTIC DEVELOPMENT

Students served by Portage College are unique in terms of their needs and Portage is able to serve these students well.

All students regardless of socio-economic status or mobility issues need access to post-secondary learning in order to contribute positively to Alberta.

Continued support from the Government of Alberta is critical.

TO PROVIDE OPPORTUNITIES FOR SUCCESS

WE NEED...

Assurance that the uniqueness of our students and communities will be recognized when any adjustments to the post-secondary system are under consideration

Increased and flexible Alberta Works funding

Grant funding for programs in the Indigenous Communities

Sustainable funding for wrap-around services including Mental Health

